



Pinnacle Select Bi-fold Patio Doors

Features and Benefits

- Available in aluminum exterior / wood interior, or aluminum exterior / aluminum interior
- Thermally broken aluminum panels and frames
- 2-5/8" thick panel construction on wood interior doors; 2-3/8" thick panel construction on aluminum interior doors
- Narrow 2-1/16" wide panels reveal more glass for beautiful views
- Standard and recessed sill options
- Multiple handing options
- Three-point multi-point locking system on 8-0 through 10-0 tall doors; four-point multi-point locking system on doors over 10-0 tall
- Handle activated concealed twin bolt

Sizes

- Standard panel widths: 2-6, 2-8, 3-0, 3-6
- Standard panel heights: 8-0, 9-0, 10-0, 11-0, 12-0
- Maximum panel size: 3-6 x 12-0

Glazing

- 1" overall double pane insulated glass, Cardinal® LoE 366 glass standard, LoE 270 and Dual Low-E optional
- Interior stop glazed

Finishes

- Interior – Wood interior doors available in Clear Select Pine or Douglas Fir. Aluminum interior doors available in color matched aluminum
- Exterior – All doors have heavy-duty thermally broken aluminum panels and frames

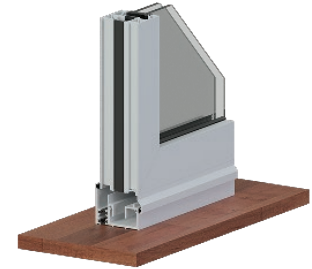
Clad Colors

All clad colors painted with the highly durability of AAMA 2604 standard finish, or upgrade to AAMA 2605 for the most challenging of environments

- 23 Standard Clad Colors available in 2604 and 2605 finish
- 20 Feature Clad Colors available in 2604 and 2605 finish
- 7 Matte Clad Colors available in 2604 finish only

Hardware

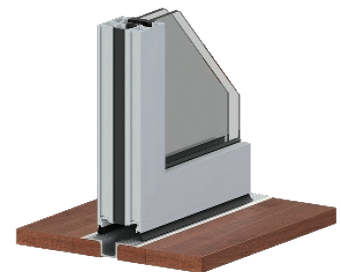
- Multi-point lock on operable panels
 - 3-point on 8-0, 9-0 and 10-0 tall doors
 - 4-point on 11-0 and 12-0 tall doors
- Three handle set styles
- Handle activated concealed twin bolt system



Bi-fold 2-3/16" STD surface track sill



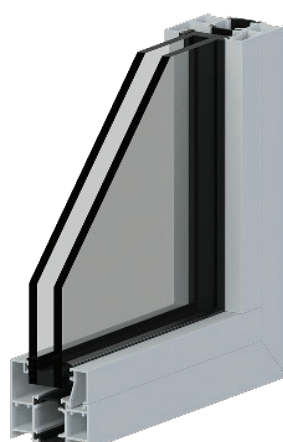
Bi-fold 1-1/2" recessed sill with drainage



Bi-fold 3/4" recessed sill no drainage



Bi-fold Alum Ext. Wood Int. Panel



Bi-fold Alum Ext. Alum Int. Panel