



# Pinnacle Select In-swing and Out-swing Patio Doors

## Features and Benefits

- Available in aluminum exterior / wood interior, or aluminum exterior / aluminum interior
- Thermally broken aluminum panels and frames
- Single-panel and two panel options
- 2-3/8" thick panel construction
- Narrow 3-3/16" wide panels reveal more glass for beautiful views
- Standard and ADA sill options
- Three-point multi-point locking system on 8-0 through 10-0 tall doors; four-point multi-point locking system on doors over 10-0 tall

## Sizes

- Standard panel widths: 2-6, 2-8, 3-0, 3-6
- Standard panel heights: 8-0, 9-0, 10-0, 11-0, 12-0
- Maximum panel size: 3-6 x 12-0
- Door sizes up to 3-6 x 12-0 single-panel door and 7-0 x 12-0 two-panel door

## Glazing

- 1" overall double pane insulated glass, Cardinal® LoE 366 glass standard, LoE 270 and Dual Low-E optional
- Interior stop glazed

## Finishes

- Interior – Wood interior doors available in Clear Select Pine or Douglas Fir. Aluminum interior doors available in color matched aluminum
- Exterior – All doors have heavy-duty thermally broken aluminum panels and frames

## Clad Colors

All clad colors painted with the highly durability of AAMA 2604 standard finish, or upgrade to AAMA 2605 for the most challenging of environments

- 23 Standard Clad Colors available in 2604 and 2605 finish
- 20 Feature Clad Colors available in 2604 and 2605 finish
- 7 Matte Clad Colors available in 2604 finish only

## Hardware

- Multi-point lock on operable panels
  - 3-point on 8-0, 9-0 and 10-0 tall doors
  - 4-point on 11-0 and 12-0 tall doors
- Non-adjustable hinges
- Three handle set styles



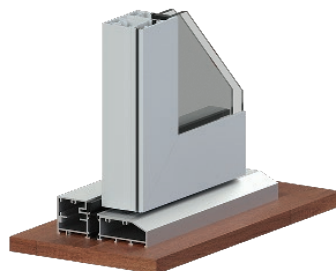
In-swing/Out-swing  
Alum Ext. Wood Int. Panel



In-swing/Out-swing  
Alum Ext. Alum Int. Panel



In-swing 1-1/4" standard sill



Out-swing 1-1/4" standard sill



ADA sill