



**WINDSOR**  
WINDOWS & DOORS

# PATIO DOORS

Wood Clad and Vinyl Patio Doors







# Table of Contents

**PINNACLE SELECT**

Multi-slide Patio Doors ..... 4

Lift & Slide Patio Doors..... 6

Swinging Patio Doors..... 8

Bi-fold Patio Doors ..... 10

**PINNACLE**

Swinging Patio Doors..... 13

Sliding Patio Doors..... 16

Bi-fold Patio Doors ..... 18

Multi-slide Patio Doors ..... 20

**NEXT DIMENSION**

Sliding Patio Doors..... 22

**OPTIONS & ACCESSORIES.....24-33**



# Imagine a Solution for Any Situation

**Windsor Windows & Doors can help bring your vision to life.** Our windows and doors open up a home to the light, air and beauty of the outside world. But it's the inspired designs and lasting performance of Windsor products that open up a world of possibilities for architects and builders.

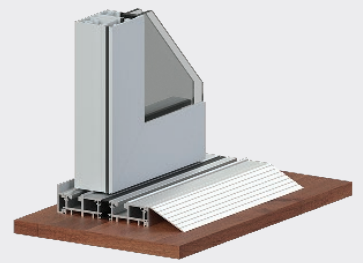
Windsor has been developing unique home construction solutions for more than 70 years. We're dedicated to bringing you the highest quality products on the market, all for the best value.

Choose from a wide selection of products for new construction, remodeling or light commercial applications. Windsor's windows and doors allow you to get creative with your next project, without sacrificing quality or stretching your budget.

**Your Vision...Our Passion**

**PINNACLE 3/4 LITE OUT-SWING PATIO DOOR.** Bluffton, South Carolina  
(Courtesy of Coastal Living Magazine/Josh Gibson).





Multi-slide 1-1/8" standard sill



Multi-slide 2-1/2" recessed sill with drainage



Multi-slide 2-1/2" recessed sill no drainage

## Pinnacle Select Multi-slide

**For inspiring views from floor to ceiling / treetop to ground level,** Windsor's Select line of multi-slide patio doors offers unique architectural appeal, blending the splendor of the outdoors with any interior space – living room, dining room, kitchen, bedroom – the design possibilities are limitless.



Multi-slide Alum Ext. Alum Int. Panel



Multi-slide Alum Ext. Wood Int. Panel

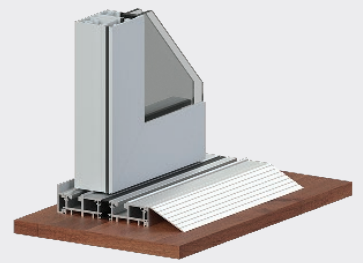


# Stacking and pocket configurations

- Choice of thermally broken, heavy-duty all aluminum exterior and interior, or thermally broken, heavy-duty aluminum exterior and wood interior
- Stacking multi-slide system aligns all panels with the stationary panel when in the fully open position; all panels are visible
- Pocket multi-slide system incorporates a pocket into the wall cavity to conceal all panels when they are in the fully open position
- Door jamb widths vary depending on the number of panels in the multi-point door system and the handing
- Up to five panels in any one direction, and 10 panels for a bi-parting multi-slide door
- 2-3/8" thick panel construction
- Narrow 3-3/16" wide panels to reveal more glass for beautiful views
- Standard panel heights: 8-0, 9-0, 10-0, 11-0 and 12-0
- Standard panel widths: 3-0, 4-0, 5-0 and 6-0
- Maximum panel sizes: 5-0 x 12-0 and 6-0 x 10-0
- Standard 1-1/8" surface mount sill with 2-1/2" recessed sill with or without drainage
- Two-point locking gear with two-way adjustable keeper
- End adjust Delrin® rollers
- Flush mount handle available in black, bronze, white and satin chrome
- Lead panel on pocket doors comes with a finger pull
- 90-degree corner doors available







Lift & Slide 1-1/8" standard sill



Lift & Slide 2-1/2" recessed sill with drainage



Lift & Slide 2-1/2" recessed sill no drainage

## Pinnacle Select Lift & Slide

**A seamless transition to the beauty of the outdoors.** Windsor's Select line of lift & slide patio doors offer stunning, virtually unobstructed views in addition to added security, soundproofing and premium protection against the elements. *Standard surface mount and recessed sill options available.*



Lift & Slide Alum Ext. Alum Int. Panel



Lift & Slide Alum Ext. Wood Int. Panel



# Stacking and pocket configurations

- Choice of thermally broken, heavy-duty all aluminum exterior and interior, or thermally broken, heavy-duty aluminum exterior and wood interior
- Stacking lift & slide system aligns all panels with the stationary panel when in the fully open position; all panels are visible
- Pocket lift & slide system incorporates a pocket into the wall cavity to conceal all panels when they are in the fully open position
- Door jamb widths vary depending on the number of panels in the lift & slide door system and the handing
- Up to five panels in any one direction, and 10 panels for a bi-parting lift & slide door
- 2-3/8" thick panel construction
- Narrow 3-3/16" wide panels to reveal more glass for beautiful views
- Standard panel heights: 8-0, 9-0, 10-0, 11-0 and 12-0
- Standard panel widths: 3-0, 4-0, 5-0 and 6-0
- Maximum panel sizes: 5-0 x 12-0 and 6-0 x 10-0
- Standard 1-1/8" surface mount sill with 2-1/2" recessed sill with or without drainage
- Lead panel on pocket doors comes with a finger pull
- Multi-point locking system
- Two 2-wheel cartridges engineered to provide maximum support
- Nylon rollers combined with stainless steel ball bearings provide effortless operation
- Designed to support up to 880 lb panels
- 90-degree corner doors available







## Pinnacle Select

# In-swing and Out-swing

**Today's homes come to life when the patio serves as a warm, open extension of the living space.** Windsor's elite line of Select swinging patio doors adds a true architectural statement sure to welcome – and impress – family and friends. Choose from in-swing or out-swing models; either is perfect for expanding the living space for entertaining or simply to enjoy the beauty of the outdoors.



In-swing/Out-swing  
Alum Ext. Alum Int. Panel

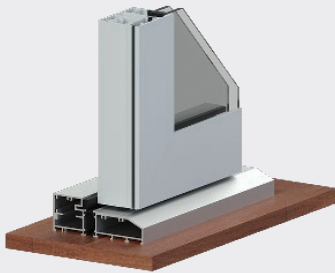


In-swing/Out-swing  
Alum Ext. Wood Int. Panel





In-swing 1-1/4" standard sill



Out-swing 1-1/4" standard sill



ADA sill

## Configurations to fit any design & lifestyle

- Choice of thermally broken, heavy-duty all aluminum exterior and interior, or thermally broken, heavy-duty aluminum exterior and wood interior
- Single-panel and two-panel options available
- 2-3/8" thick panel construction
- Narrow 3-3/16" wide panels reveal more glass for beautiful views
- Standard panel heights: 8-0, 9-0, 10-0, 11-0 and 12-0
- Standard panel widths: 2-6, 2-8, 3-0, 3-6
- Maximum panel size: 3-6 x 12-0
- Frame widths up to 3-6 x 12-0 single-panel door and 7-0 x 12-0 two-panel door
- Standard 1-1/4" surface mount and ADA sill options
- Three-point multi-point locking system on 8-0 through 10-0 tall doors; four-point multi-point locking system on doors over 10-0
- Three handle styles: Aria, Acacia and Summit in black, bronze, white and satin chrome
- Hinges available in bronze and satin chrome







## Pinnacle Select Bi-fold

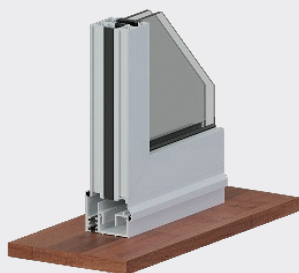
**Combining beautiful style and effortless function,** Windsor's line of Select bi-fold patio doors is another option to connect the home's interior space to outdoor patio living. These bi-fold doors fold like an accordion to create wide-open entryways. The hinge system provides stability and smooth operation while the multi-point locking system provides uncompromised security.



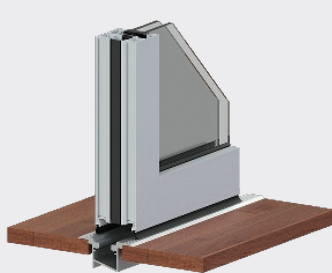
Bi-fold Alum Ext. Alum Int. Panel



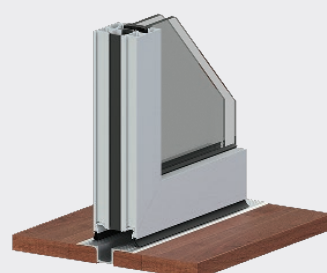
Bi-fold Alum Ext. Wood Int. Panel



Bi-fold 2-3/16" STD surface track sill



Bi-fold 1-1/2" recessed sill with drainage



Bi-fold 3/4" recessed sill no drainage



# Distinctive options for unique lifestyles

- Choice of thermally broken, heavy-duty all aluminum exterior and interior, or thermally broken, heavy-duty aluminum exterior and wood interior
- 2-5/8" thick panel construction on wood interior doors 2-3/8" thick panel construction on aluminum interior doors
- Narrow 2-1/16" wide panels to reveal more glass for beautiful views
- Multiple handing options for maximum 8 panels and 21 ft frame width; bi-parting can be 8L-8R with a maximum frame width of 42 ft
- Standard panel heights 8-0, 9-0, 10-0, 11-0 and 12-0
- Standard panel widths 2-6, 3-0, 3-6
- Maximum panel size 3-6 x 12-0
- Standard 2-3/16" surface mount, 3/4" recessed without drainage and 1-1/2" recessed with drainage sill options
- Three-point multi-point locking system on 8-0 through 10-0 tall doors; four-point multi-point locking system on doors over 10-0
- Handle activated concealed twin bolt system
- Bi-fold hardware finishes
  - *All aluminum door:*
    - Hinges, D-handle, twin bolt handle, top roller assembly and bottom hinge guide will match the color of the door
  - *Aluminum door with wood interior:*
    - Hinges: Interior hinges available in bronze or black; exterior hinges will match exterior door color
- Interior D-handle: Available in bronze or black
- Interior twin bolt handle: Available in bronze or black
- Top roller assembly: Interior available in bronze or black; exterior top roller assembly will match exterior door color
- Bottom hinge guide: Interior available in bronze or black; exterior will match exterior door color
- Three handle styles available in black, bronze, white and satin chrome







PINNACLE DIRECT SET SWINGING PATIO DOOR. Desert Mountain, Arizona.





## Pinnacle

# Swinging Patio Doors

**The highlight of a house.** Your patio is an extension of your home, and your home is an extension of yourself and your style. That's why at Windsor we offer you several options for our Pinnacle swinging patio doors. Choose from in-swing or out-swing models, with one or two operational panels.

Include up to four panels in one frame. For safety, we can install multi-point locking hardware – for style, we can accent your doors with a customized transom,

radius or sidelites. A complement to any home's décor, Windsor's beautifully crafted 1/2 and 3/4 lite panel doors are available in the finest wood interior finishes and offer more customizable features with one or two flat panels. The design options continue, with more than 50 different exterior clad colors and finishes, several hardware styles, multiple hardware finishes and numerous grille options.





PINNACLE IN-SWING PATIO DOOR. Alpine, Utah.

## Pinnacle In-swing Patio Door

Experience the beauty and performance of wood, available in clad or primed exterior.

- Clad doors available in heavy-duty extruded aluminum cladding; primed doors come standard with cellular PVC exterior trim for a traditional, decorative appearance
- Clad doors available in Clear Select Pine, Douglas Fir, Natural Alder, primed, painted white or painted black interior finishes; primed doors available in Clear Select Pine, primed or painted white as interior finishes
- All clad colors painted in-house with the highly durable AAMA 2604 standard finish, or upgrade to AAMA 2605 for the most challenging of environments – choose from 23 standard and 27 feature colors; custom colors available
- “Easy Adjust” hinge system for effortless operation and correction after installation; non-removable-pin ball bearing hinge also available
- Active stiles constructed of an LVL core material for added strength and stability
- Dual-seal frame weatherstripping at panel face and edge improves air and thermal performance
- Wept sill system to eliminate water infiltration
- Heavy-duty, self-adjusting sweep
- Single or bi-hinge panel operation
- Panels available in traditional French or contemporary narrow stile
- Integral structural astragal allows for doors up to 12 feet wide to be placed in a single frame, which decreases the potential for air and water infiltration
- Oak interior sill; exterior sill available in mill or bronze anodized finishes
- Rigid aluminum nail fin
- Stainless steel multi-point locking hardware option for added security
- 1/2 and 3/4 lite available with flat or split panel option
- Five standard heights: 6'8", 6'10", 8'0", 9'0" and 10'0" (9'0" and 10'0" doors available in French panels only)

*\*Legend HBR in-swing patio door available in all sizes (except 9'0" and 10'0") and have the same rough opening dimensions.*

**NOTE:** Primed in-swing patio doors come standard with cellular PVC exterior trim.



## Pinnacle

# Out-swing Patio Door

When space is at a premium, an out-swing is the perfect solution.

- Clad doors available in heavy-duty extruded aluminum cladding
- Clad doors available in Clear Select Pine, Douglas Fir, Natural Alder, primed, painted white or painted black interior finishes
- All clad colors painted in-house with the highly durable AAMA 2604 standard finish, or upgrade to AAMA 2605 for the most challenging of environments – choose from 23 standard and 27 feature colors; custom colors available
- “Easy Adjust” hinge system for effortless operation and correction after installation; non-removable-pin ball bearing hinge also available
- Active stiles constructed of an LVL core material for added strength and stability
- Integral structural astragal allows for doors up to 12 feet wide to be placed in a single frame, which decreases the potential for air and water infiltration
- Wept sill system to eliminate water infiltration
- Heavy-duty, self-adjusting sweep
- Single or bi-hinge panel operation
- Panels available in traditional French or contemporary narrow stile
- Low clearance (ADA-approved) sill option
- Oak interior sill; exterior sill available in mill or bronze anodized finishes
- Rigid aluminum nail fin
- Stainless steel multi-point locking hardware option for added security

- 1/2 and 3/4 lite available with flat or split panel option
- Five standard heights: 6'8", 6'10", 8'0", 9'0" and 10'0" (9'0" and 10'0" doors available in French panels only)

*\*Legend HBR not available as an out-swing patio door.*



PINNACLE DIRECT SET WINDOWS AND OUT-SWING NARROW STILE PATIO DOOR. Washington, D.C.



PINNACLE AWNING AND CASEMENT PICTURE WINDOWS, AND OUT-SWING FRENCH DOORS IN CHERRY WOOD. Pebble Beach, California.





## Pinnacle Sliding Patio Doors

**Smooth, sleek and incredibly charming.** Whether you choose traditional French or contemporary narrow stiles, Pinnacle sliding doors will be the talk of your next outdoor event with their incredible ease and aesthetics. With up to four panels, the doors glide effortlessly on two end adjustable tandem steel ball bearing rollers. Sliding doors have a pultruded fiberglass sill available in a gray or bronze finish. The heavy-duty weatherstripping also ensures your

patio doors will be ready for the changing seasons, even when your patio is not. Primed sliding patio doors come standard with cellular PVC exterior trim.

\*9'0" and 10'0" heights available in clad French slider only.

\*\*Legend HBR French slider available in all sizes (except 9'0" and 10'0" heights) and have the same rough opening dimensions. Legend HBR not available as a narrow slider.



# A space-saving option with traditional looks and modern performance

- Clad doors available in heavy-duty extruded aluminum cladding; primed doors come standard with cellular PVC exterior trim for a traditional, decorative appearance
- Clad doors available in Clear Select Pine, Douglas Fir, Natural Alder, primed, painted white or painted black interior finishes; primed doors available in Clear Select Pine, primed or painted white interior finishes
- All clad colors painted in-house with the highly durable AAMA 2604 standard finish, or upgrade to AAMA 2605 for the most challenging of environments – choose from 23 standard and 27 feature colors; custom colors available
- Panels available in traditional French or contemporary narrow stile; French stile allows for the “look” of a swinging door where space won’t allow for one
- Quad option including four panels in one frame; center panels operate
- Doors slide on two tandem, heavy-duty, end-adjustable, ball bearing rollers for years of smooth, trouble-free operation
- All stiles constructed of an LVL core for a stronger, straighter, more durable door
- Wood parting stops and absence of screws provide a warm, clean look
- Aluminum jamb covers at the head and strike jambs hide exposed screws and provide a smoother, more attractive surface
- Heavy-duty interlock improves air and structural performance
- One-piece, fiberglass pultruded sill minimizes cold conduction; available in gray or bronze
- Heavy-duty extruded screen ensures durability and smooth operation
- Standard two-point lock for added security
- Integral nail fin on clad doors
- Five standard heights: 6'8", 6'10", 8'0", 9'0" and 10'0" (9'0" and 10'0" doors available in clad French slider only)



PINNACLE CASEMENT AND DIRECT SET WINDOWS, AND BI-PARTING SLIDING PATIO DOOR. Desert Mountain, Arizona.





## Pinnacle

# Bi-fold Patio Doors

**Open up your world.** Quality, high-performance and stunning beauty come together with Pinnacle bi-fold patio doors. We offer this versatile product in many sizes and configurations, which allows for installation in standard construction openings. This innovative concept brings open-air luxury to virtually any custom project.

Our bi-fold patio doors feature a revolutionary hinge system that will provide graceful operation and reliable function for years to come. With options including three premium hardware finishes, 50 clad colors and a wood interior

selection of Clear Select Pine, Natural Alder and Douglas Fir, your possibilities are wide open.

Imagine how our bi-fold patio doors can enhance your projects. Homeowners love the way these doors bring the beauty of nature into their home. Pinnacle bi-fold doors are offered in five heights: 6'8", 6'10", 8'0", 9'0" and 10'0" and can be assembled with as few as two panels, and up to eight panels wide. Imagine having the capability to span an opening as high as 10' tall and as long as 24' wide!

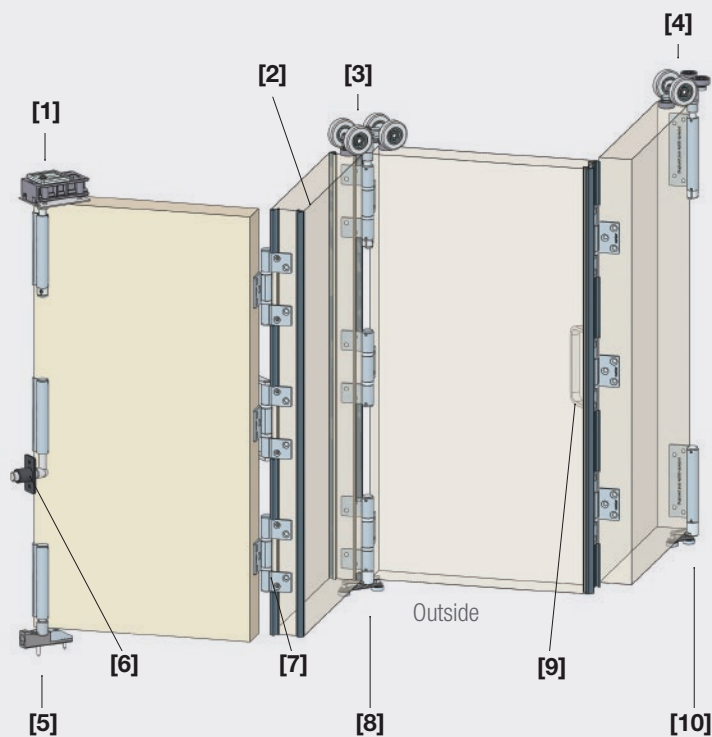


# Let the beauty of nature into your home

- Multi-point locking system on passage panels features three-point jamb-engaged tongue system for uncompromised security
- Centor Architectural E3 bi-fold hardware system provides stability and smooth operation
- Lever handle activated head and sill twin bolt system for added security
- Wept sill system to eliminate water infiltration
- Dual weatherstrips at panel edge improve air and thermal performance
- Stiles constructed of an LVL core material for added strength and stability
- Panels available in traditional French or contemporary narrow stile
- Five standard heights: 6'8", 6'10", 8'0", 9'0" and 10'0" (9'0" and 10'0" doors available in French panels only)
- Custom sizes available
- Two weatherstrip barriers between each panel and between panels and frame; urethane foam encased in polyethylene film around entire frame; pile weatherstripping along head and sill provide added protection
- Interior – Clear Select Pine, Douglas Fir or Natural Alder, primed, painted white or painted black interior finishes
- Exterior – Heavy-duty extruded aluminum cladding
- All clad colors painted in-house with the highly durable AAMA 2604 standard finish, or upgrade to AAMA 2605 for the most challenging of environments – choose from 23 standard and 27 feature colors; custom colors available

## Bi-fold Patio Door Terminology

- [1]** Top pivot
- [2]** Weatherseal
- [3]** Intermediate carrier
- [4]** End carrier
- [5]** Concealed bottom pivot
- [6]** Wall pivot
- [7]** Hinge
- [8]** Concealed intermediate guide
- [9]** Hinge with handle
- [10]** Concealed end guide







PINNACLE MULTI-SLIDE PATIO DOOR. Atlanta, Georgia.

## Pinnacle

# Multi-slide Patio Doors

**Enhance your views.** Whether your home overlooks a beautiful cityscape or a quiet lake, Pinnacle multi-slide patio doors create an impactful design element. Highlight brilliant outdoor views and give your home a unique architectural look that expands the feel of indoor living space.

Available in stacking or pocket configurations up to 32 feet wide, our clad multi-slide patio doors offer many of

the same features as other products in the Pinnacle line. Choose from 23 standard and 27 feature colors, one of three wood species as well as a variety of glazing options and grille designs.



# Highlight exceptional outdoor views while expanding interior living spaces

- Stacking and pocket configurations
  - Stacking multi-slide door systems stack all panels in line with the stationary panel when the panels are in the fully-open position; in the stacking configuration, all panels are still visible
  - Pocketed multi-slide door systems incorporate a pocket in the wall cavity to conceal all panels when they are in the fully-open position; in the pocketed configuration, all panels are hidden in the pocket
- Door jamb widths vary depending on the number of panels in the multi-slide system
- One panel (pocket only) to eight panel configurations with maximum 32'0" frame width
- All applications using multi-slide door systems require overhangs equal to or greater than the height of the multi-slide door
- Main frame head jamb and sill use dark bronze anodized aluminum extrusions with powder paint color-matched frame nosing and pocket covers
- Folding aluminum nailing fins applied
- Pinnacle 1-3/4" thick sliding patio door panels
- Heavy-duty interlock improves air and structural performance
- Panels slide on two tandem, heavy-duty, end-adjustable ball bearing rollers for years of smooth, trouble-free operation
- Standard heights
  - French panels: 6'8", 6'10", 8'0", 9'0", 10'0"
  - Narrow panels: 6'8", 6'10", 8'0"
- Panel width callouts: 2'6", 3'0", 4'0"
- Maximum frame width: 32'0"
- Interior – Clear Select Pine, Douglas Fir or Natural Alder, primed, painted white or painted black interior finishes
- All clad colors painted in-house with the highly durable AAMA 2604 standard finish, or upgrade to AAMA 2605 for the most challenging of environments – choose from 23 standard and 27 feature colors; custom colors available
- Pinnacle sliding patio door end-adjustable roller system
- Pinnacle sliding patio door two-point locking gear and keeper
- Flush mount handles standard on pocket and stacking door systems; available in oil rubbed bronze, faux bronze, black and satin nickel (figure 1)
- Flush mount handles standard with a keyed lock
- All panels standard with satin nickel finger pull located at the edge of the lead operating panel (figure 2)



Fig. 2



Fig. 1



## Next Dimension

# Sliding Patio Doors

**Your sliding work of art.** Our Next Dimension line of sliding patio doors are highly durable, effortless to open and close and feature a long list of accessories, screens, blinds between the glass and glass options for a look all your own.

Next Dimension vinyl sliding patio doors hold to the same standard of quality as our windows. Employing heavy-duty screens, fusion-welded corners, multi-chamber reinforced extrusions and a positive pressure draining system, our sliding patio doors offer smooth operation, durability and weatherproofing.

Building on the ease-of-use and long-lasting performance, Next Dimension sliding patio doors can be fitted with an optional blinds between the glass system. Featuring simple, no-cord operation safe for pets and children, lift and tilt functionality and effortless cleaning, patio doors with blinds between the glass are designed to offer a no-hassle solution to let you control natural light and privacy in your home.



NEXT DIMENSION SLIDING PATIO DOOR. Ankeny, Iowa.



# Low maintenance meets effortless operation

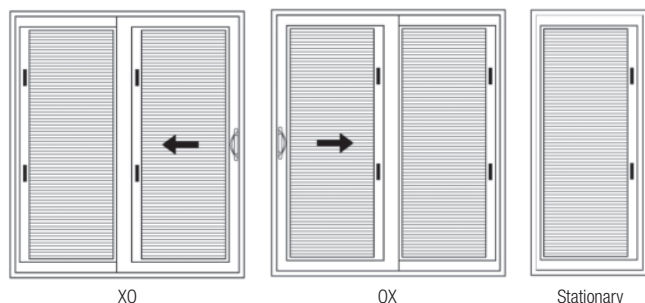
- 4-1/2" frame width built from thick vinyl extrusions
- Fusion-welded frame and panel corners increase strength and maximize weatherproof performance
- Aluminum reinforcement in both interlock stiles for added strength and security
- Smooth operation on four adjustable steel ball bearing rollers on a stainless steel track
- Matching standard transom and sidelite additions for beautiful combinations
- Extruded aluminum threshold cover to protect sill and prevent debris build-up
- Reversible handing in the field before installation (except 8'0" heights)
- Triple fin weatherstripping for improved protection against air and water infiltration
- Quad option including four panels in one frame; center panels operate
- Panel anti-lift blocks for added security
- Heavy-duty extruded screen
- Blinds between the glass option available
  - 1" OA insulated glass in clear IG
  - UV-coated 12.5 mm aluminum blinds
  - Blinds available in white only
  - Robust internal mechanisms assure operational durability
  - Tested to 10,000 raise and lower cycles; equivalent of 20 years of actual use
  - Efficient force-to-lift ratio for the lift and tilt mechanisms
  - Blinds are handed for OX and XO door operation
- D-shaped handle offered in white, clay, satin nickel, faux bronze and black
- Available in standard white or clay, with seven additional painted exterior colors to choose from
- Black painted interior available



NEXT DIMENSION SLIDING PATIO DOOR WITH PLAZA GRILLE PATTERN. Cedar Rapids, Iowa.

## Blinds Between the Glass

All vinyl sliding patio doors are handed from the exterior. The images shown below are viewed from the interior looking out to show proper location of blind/tilt and raise/lower mechanism.



Sizes available in OX, XO and Stationary

- 2668S
- 26610S
- 3068S
- 30610S
- 5068
- 50610
- 6068
- 60610





# Options & Accessories

Windsor’s in-house powder paint application can help you make a statement with your windows and doors. Choose from over 50 shades in our standard and feature color palettes, or make it truly unique with custom color matching. All paints are protected with the highly durable 2604<sup>1</sup> finish, or you can upgrade to 2605<sup>2</sup> for even stronger defense against the elements.<sup>3</sup>

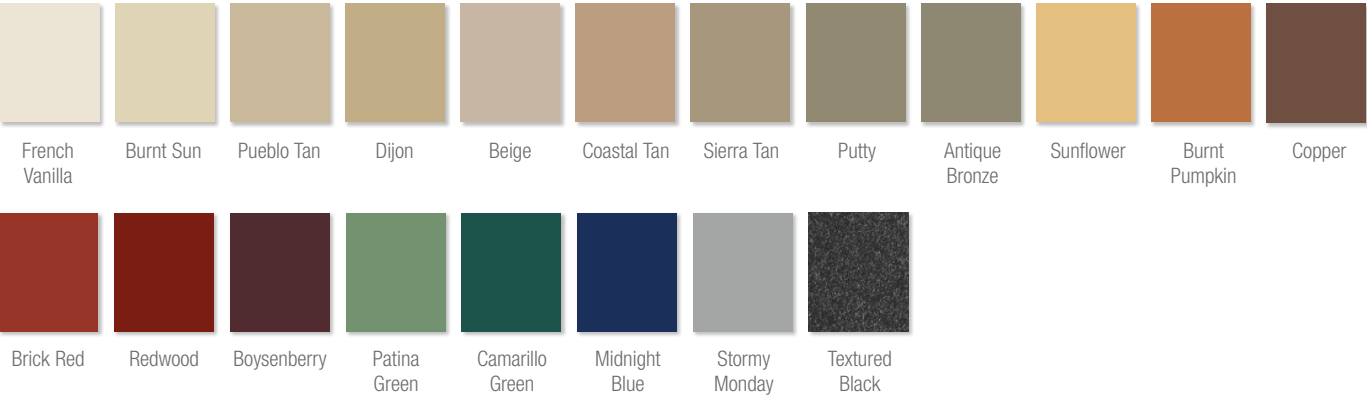
## STANDARD CLAD COLORS Pinnacle Select | Pinnacle | Legend HBR

Available in 2604 and 2605 finish.



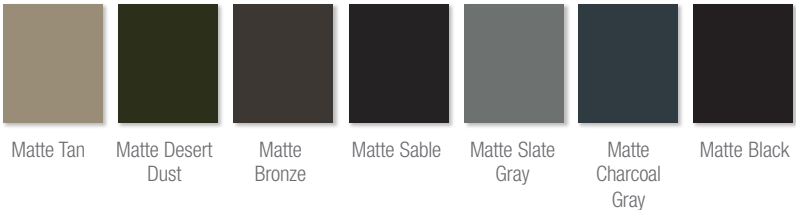
## FEATURE CLAD COLORS Pinnacle Select | Pinnacle | Legend HBR

Available in 2604 and 2605 finish. (Custom color matching is also available)



## MATTE CLAD COLORS Pinnacle Select | Pinnacle | Legend HBR

Available in 2604 finish only.



<sup>1</sup>AAMA 2604 finish backed by a 20-year warranty.  
<sup>2</sup>AAMA 2605 finish backed by a 30-year warranty.  
<sup>3</sup>For applications within one mile of the coast, AAMA 2605 finish will carry a 10-year warranty and AAMA 2604 will carry no warranty.

For specific warranty details, please refer to the complete warranty document posted on our website, [www.windsorwindows.com](http://www.windsorwindows.com).



**INTERIOR FINISHES** Pinnacle | Legend HBR

Pinnacle bi-fold and multi-slide patio doors are available in Clear Select Pine, Douglas Fir and Natural Alder.  
Legend HBR patio doors are only available in Clear Select Pine.

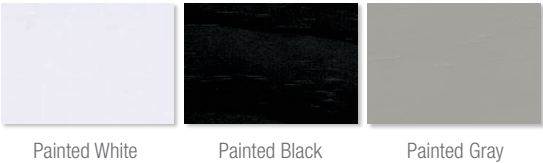
**Interior Wood Species**



**Interior Primed Finishes**



**Prefinished Painted Interiors**

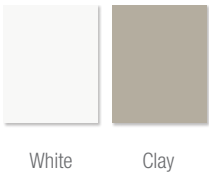


**Prefinished Stained Interiors** Clear coat and stain samples are shown on Clear Select Pine and represent options available. Actual finish may vary.

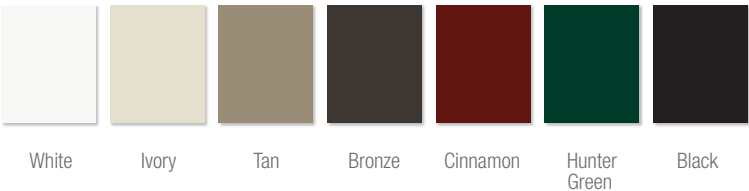


**NEXT DIMENSION COLORS** White vinyl interior is available with white, ivory, tan, bronze, cinnamon, hunter green or black exterior.  
Clay vinyl interior is available with bronze or black exterior.

**Standard Vinyl**



**Painted Vinyl Exterior Colors**



**Painted Vinyl Interior Colors**





**GRILLES** All of our wood and cellular PVC (CPVC) Windsor Divided Lite bars are hand-fitted to ensure a perfect fit.

\*Next Dimension patio doors are only available with a 3/4" profiled inner grille in white or clay.



7/8" & 1-1/4"  
Perimeter Grille



3/4" & 1"  
Profiled Inner Grille\*



13/16" Flat Inner Grille  
(Not available on bi-fold)



7/8" & 1-1/4"  
Exterior Clad Ogee  
Windsor Divided Lite  
(Clad & HBR)



7/8" & 1-1/4"  
Exterior CPVC Ogee  
Windsor Divided Lite  
(Primed only)



5/8", 7/8", 1-1/4" & 2"  
Tall Putty Windsor Divided Lite

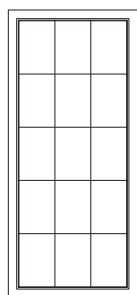


5/8", 7/8" & 1-1/4"  
Contemporary Windsor  
Divided Lite  
(Clad only)

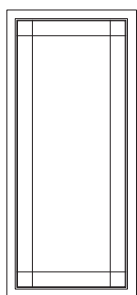


3-3/8"  
Simulated Mid Rail  
(Clad only)

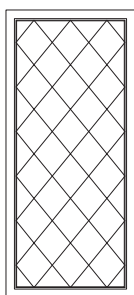
**GRILLE PATTERNS** Some grille patterns are not available in all configurations and products.



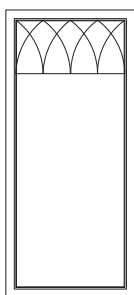
Colonial



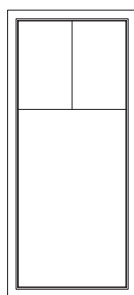
Prairie



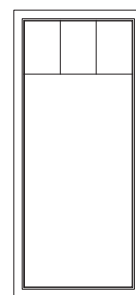
Diamond



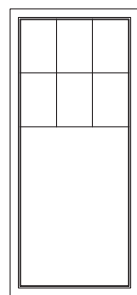
Gothic



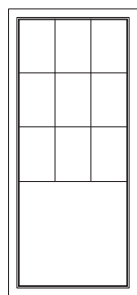
Custom Plaza



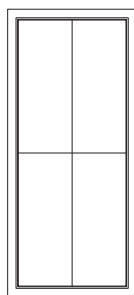
Single Plaza



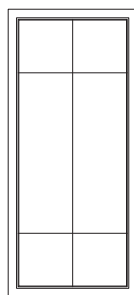
Double Plaza



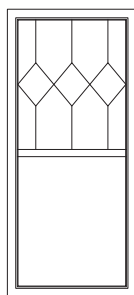
Triple Plaza



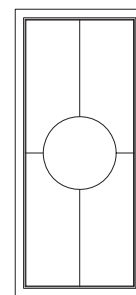
Specified  
Equal Lite  
(2x2 shown)



Custom Pattern  
(Example)



Custom Pattern  
(Example)

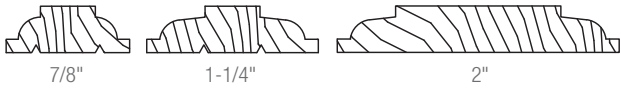


Custom Pattern  
(Example)



**GRILLE PROFILES** Pinnacle | Legend HBR

**Interior Grilles – Ogee**



**Interior Grilles – Putty**



**Interior Grilles – Contemporary**



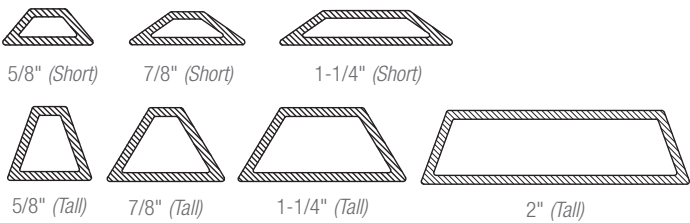
**Interior Grilles – Midrail**



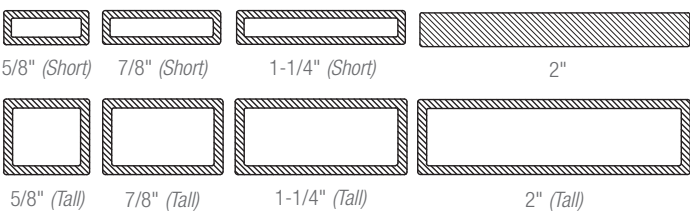
**Exterior Grilles – Ogee**



**Exterior Grilles – Putty**



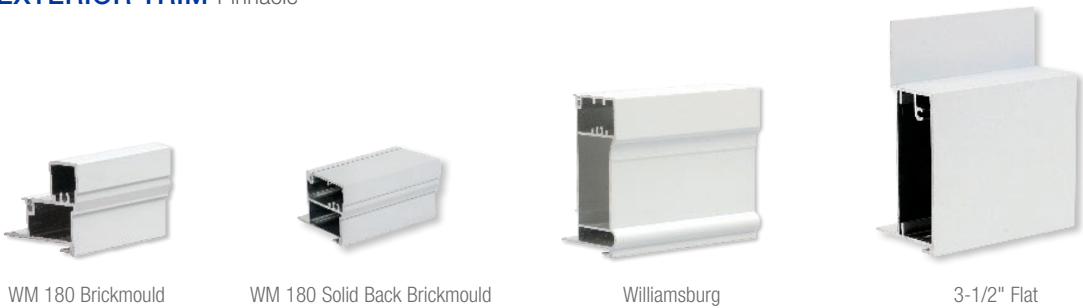
**Exterior Grilles – Contemporary**



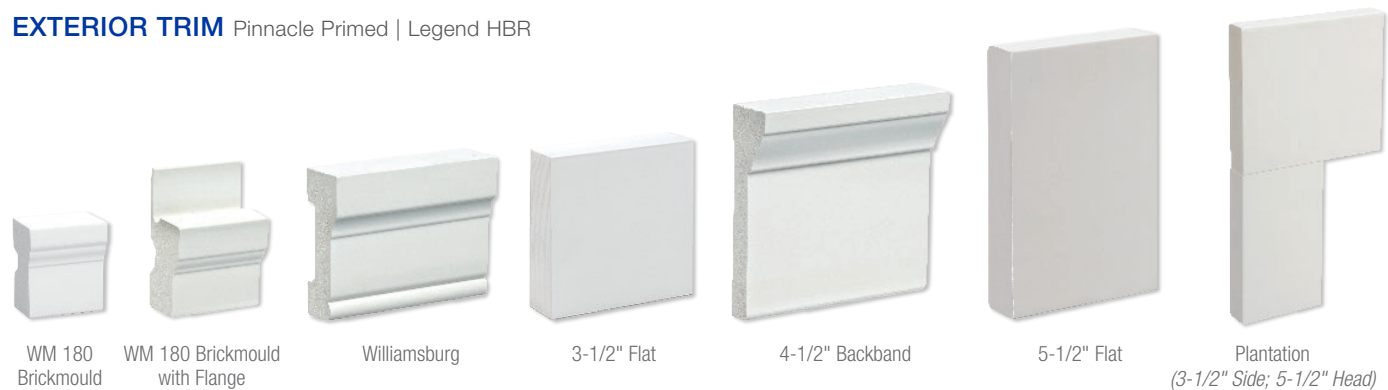
**Exterior Grilles – Midrail**



**EXTERIOR TRIM** Pinnacle

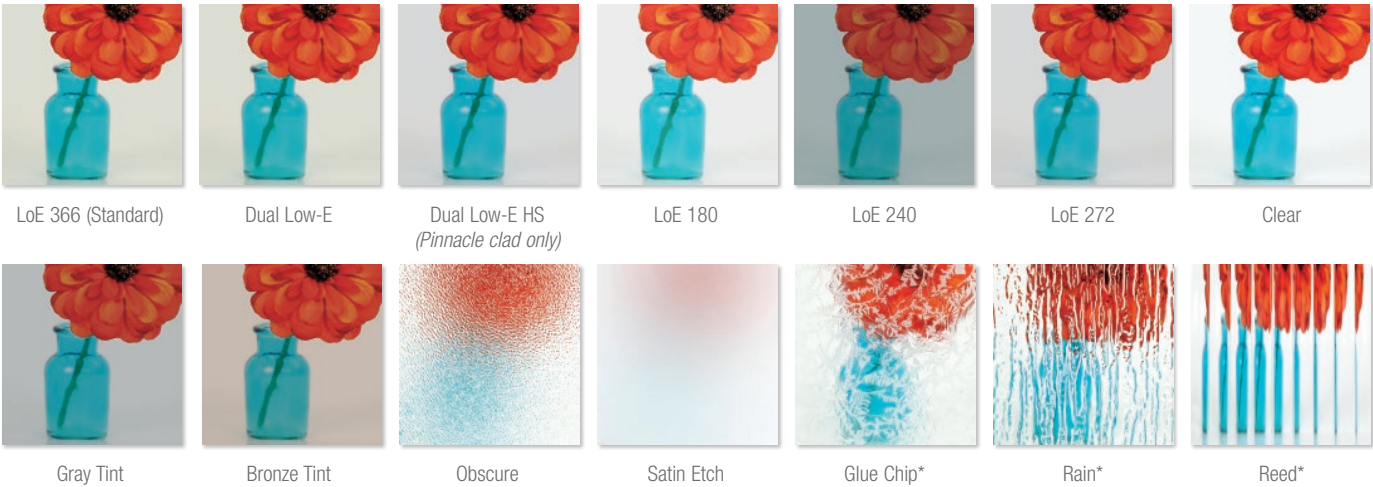


**EXTERIOR TRIM** Pinnacle Primed | Legend HBR

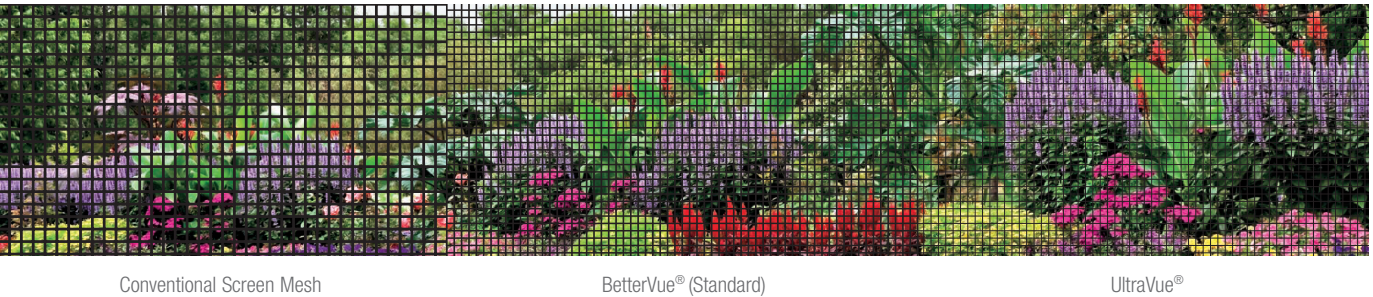




**GLASS** Pinnacle | Legend HBR | Next Dimension \*Special order item.



**SCREENS** All exterior-applied screens for Pinnacle patio doors come with screen frames matching the clad color of the unit.





**INTERIOR TRIM** Pinnacle | Legend HBR | Next Dimension

Custom-fitted wood trim is available in Clear Select Pine, Douglas Fir and Natural Alder. *(All photos shown in Clear Select Pine.)*

**Interior Trim**



WM 327 • 2-1/4"



WM 356 • 2-1/4"



WM 366 • 2-1/4"



WM 351 • 2-1/2"



WM 361 • 2-1/2"



WM 445 • 3-1/4"



WM 444 • 3-1/2"



RB 03 • 3-1/2"



WM 473 • 2-1/4"



WM 433 • 3-1/4"



WM 412 • 3-1/2"

**Rosettes**



Rosette • 2-3/4"



Rosette • 3-3/4"

**NOTE:** Printing limitations prevent exact color/finish representation. See your Windsor distributor for actual samples.

## PATIO DOOR HANDLES AND FINISHES Pinnacle | Legend HBR

Finishes marked with asterisks\* feature a clear coating that protects the finish against tarnish and peeling.

This process extends the rich, bright life of the finish and dramatically delays the aging process.

*Bi-fold doors are available with the contemporary swinging handle in Satin Nickel, Brass and Oil Rubbed Bronze.*



Classic  
Swinging Patio  
Door Handle

Contemporary  
Swinging Patio  
Door Handle



Euro  
Swinging Patio  
Door Handle



Contemporary  
Sliding Patio  
Door Handle

Euro  
Sliding Patio  
Door Handle

*Not available in  
Antique Nickel*

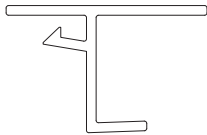


Flush mount  
Multi-slide and Sliding  
Patio Door Handle

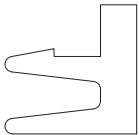




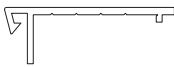
**ACCESSORIES** Next Dimension



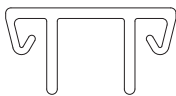
Drywall Return



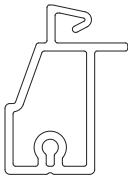
Mull Groove Filler



Stucco Clip



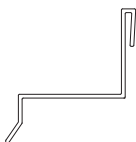
1/2" Mull Cover



Brickmould Accessories



Jamb Extension Clip



Standard Drip Cap

**SLIDING PATIO DOOR HANDLE AND FINISHES** Next Dimension

Finishes are the same for both interior and exterior handles.



White



Clay



Satin Nickel\*



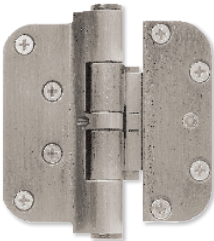
Faux Bronze\*



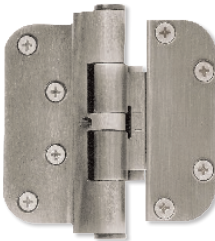
Black

\*Only available with Painted Exteriors.

**SWINGING PATIO DOOR HINGES** Pinnacle | Legend HBR



Adjustable Guide Hinge



Adjustable Set Hinge



Ball Bearing Hinge

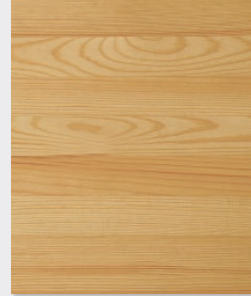
**NOTE:** Printing limitations prevent exact color/finish representation. See your Windsor distributor for actual samples.



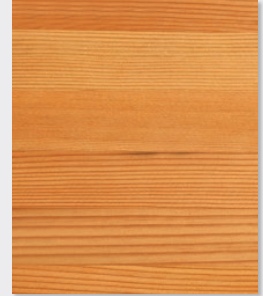
## PINNACLE SELECT PATIO DOOR OPTIONS

### INTERIOR WOOD SPECIES

Pinnacle Select Patio Doors

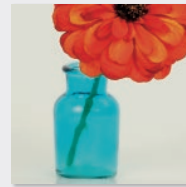


Clear Select Pine

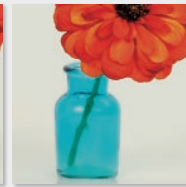


Douglas Fir

### GLASS Pinnacle Select Patio Doors



LoE 366 (Standard)



Dual Low-E



LoE 270

### GRILLE PROFILES Pinnacle Select Patio Doors

#### Interior Grilles – Putty

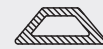


5/8"



7/8"

#### Exterior Grilles – Putty



5/8" (Short)



7/8" (Short)

#### Interior Grilles – Contemporary



5/8"



7/8"

#### Exterior Grilles – Contemporary



5/8" (Short)



7/8" (Short)



PINNACLE SELECT PATIO DOOR OPTIONS

PATIO DOOR HANDLES AND FINISHES Pinnacle Select Patio Doors



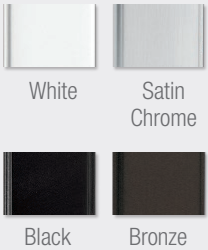
Aria  
Handle



Acacia  
Handle



Summit  
Handle



Multi-Slide  
Handle



Lift & Slide  
Q-Arte Handle  
(Bronze or Satin  
Chrome)



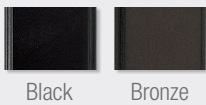
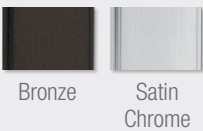
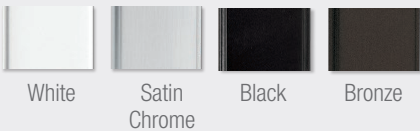
Lift & Slide  
Temporary Handle  
(Silver)



Wood Interior Bi-fold  
Twin Bolt Handle  
(Black or Bronze)



Aluminum Interior  
Bi-fold Twin Bolt Handle  
(Black or Bronze)



NOTE: Printing limitations prevent exact color/finish representation. See your Windsor distributor for actual samples.

PINNACLE MULTI-SLIDE PATIO DOOR. Waukeee, Iowa.





**Windsor Windows & Doors has distinct product lines for every application.** New construction. Room additions. Window replacement. Windsor has the solutions to help meet any home building or home improvement need. Discover all of the products we have to offer.

# Make every project a success.



## Pinnacle

The strength and beauty of natural wood define our elite Pinnacle line of products. Crafted from the finest pine, alder and fir, Pinnacle windows and doors add a measure of elegance to any home.

From subtle to showy, Pinnacle products are endlessly customizable through an array of finishes, hardware, shapes, grille options, cladding colors, glass and trim options, allowing the perfect window or door to be created.

Homeowners can choose from the technologically advanced Pinnacle Select, the durable and damage resistant Pinnacle wood clad or Pinnacle primed, which arrives ready to be painted.

## Legend

Legend products are constructed from solid cellular PVC, creating the traditional look and feel of painted wood with the low maintenance and strong durability of vinyl. Our windows are protected against rotting, warping, cracking or swelling with a 25-year warranty. Legend products are well suited for both new construction and historical renovation.

Legend HBR products combine the strength and durability of our Legend cellular PVC frame with a wood clad sash. This powerful hybrid offers a low-maintenance exterior with a beautiful wooden interior.

## Next Dimension

Next Dimension Signature windows and doors are robust, reliable products that offer the resilience of extruded multi-chambered vinyl. Enhanced components and sturdy construction add strength and stability. Homeowners enjoy exceptional performance and energy efficiency.

Next Dimension Classic is available in single and double hung units, sliders and sliding patio doors. What makes Next Dimension Classic unique is its sloped sill, tilt sash, brickmould profile frame and decorative features, such as a profiled inner grille and simulated divided lite.

Next Dimension Pro vinyl windows and patio doors are designed for light commercial, multi-family and residential applications, all at a highly competitive price. Vinyl extrusions ensure superior weathering, durability and color retention. Construction features are built in to reduce maintenance, add strength and security, and maximize weather resistance.

All Next Dimension vinyl products are available in white or clay, as well as seven painted exterior colors (white, ivory, tan, bronze, cinnamon, hunter green and black). Our vinyl windows are highly rated for performance and many even offer commercially rated performance. All of our vinyl products are low maintenance and are backed by a lifetime limited warranty.

## Revive™ Pocket Replacement Windows

There's a lot to love about a home – its unique character, timeless details and genuine craftsmanship. Drafty, unsightly windows can easily steal away from the beauty of these features. That's where Revive pocket replacement windows come into the picture.

Each window can be transformed with stunning Windsor quality in about an hour – with fewer worries about disturbing any treasured wood trim or other interior and exterior features. And because they're meticulously built to order with customizable features in three high-quality materials (wood clad, hybrid and vinyl), Windsor Revive pocket replacement windows are a fast, uncomplicated upgrade.

## Revive Sash Replacement Kit

Replace old, drafty, inefficient double hung sashes with energy efficient, dual pane sashes. Windsor's Revive Sash Replacement Kit makes updating easy, allowing homeowners to leave existing interior trim and plaster in place. Choose from three different replacement sashes: versatile primed wood, durable aluminum clad or low-maintenance cellular PVC. Revive sashes feature EZ Tilt, which provides fast access for hassle-free cleaning.

---

For more information on all of our products, visit us at [www.windsorwindows.com](http://www.windsorwindows.com).





CONNECT WITH US



900 South 19th Street, West Des Moines, IA 50265 • 515.223.6660 • 800.218.6186  
2210 Stafford Street Extension, Monroe, NC 28110 • 704.283.7459 • 800.205.5665

[www.windsorwindows.com](http://www.windsorwindows.com)

A WOODGRAIN COMPANY

© 2023 Woodgrain Millwork Inc. Woodgrain Millwork, Windsor, the Windsor Lion logo, Next Dimension and Legend are registered trademarks of Woodgrain Millwork Inc. Windsor Windows & Doors, Pinnacle, Revive and Redstone are trademarks of Woodgrain Millwork Inc.



*Windsor Windows & Doors is an ENERGY STAR® partner and an NFRC and WDMA member. Windsor products are certified and labeled according to the guidelines established by the National Fenestration Rating Council (NFRC).*