



## Pinnacle Select Bi-fold Patio Doors

### Features and Benefits

- Available in aluminum exterior / wood interior, or aluminum exterior / aluminum interior
- Thermally broken aluminum panels and frames
- 2-5/8" thick panel construction on wood interior doors; 2-3/8" thick panel construction on aluminum interior doors
- Narrow 2-1/16" wide panels reveal more glass for beautiful views
- Standard and recessed sill options
- Multiple handing options
- Three-point multi-point locking system on 8-0 through 10-0 tall doors; four-point multi-point locking system on doors over 10-0 tall
- Handle activated concealed twin bolt

### Sizes

- Standard panel widths: 2-6, 2-8, 3-0, 3-6
- Standard panel heights: 8-0, 9-0, 10-0, 11-0, 12-0
- Maximum panel size: 3-6 x 12-0

### Glazing

- 1" overall double pane insulated glass, Cardinal® LoE 366 glass standard, LoE 270 and Dual Low-E optional
- Interior stop glazed

### Finishes

- Interior – Wood interior doors available in Clear Select Pine or Douglas Fir (Note: interior prefinish not available); aluminum interior doors available in color matched aluminum (Note: exterior and interior aluminum colors will be the same)
- Exterior – All doors have heavy-duty thermally broken aluminum panels and frames

### Clad Colors

All clad colors painted in-house with the highly durable AAMA 2604 standard finish or upgrade to AAMA 2605 for the most challenging of environments

- 24 Standard Clad Colors available in 2604 and 2605 finish
- 20 Feature Clad Colors available in 2604 and 2605 finish (Custom color matching is also available)
- 7 Matte Clad Colors available in the 2604 finish only

### Hardware

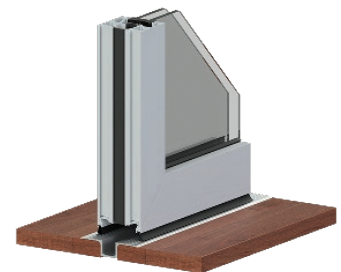
- Multi-point lock on operable panels
  - 3-point on 8-0, 9-0 and 10-0 tall doors
  - 4-point on 11-0 and 12-0 tall doors
- Three handle set styles
- Handle activated concealed twin bolt system



Bi-fold 2-3/16" STD surface track sill



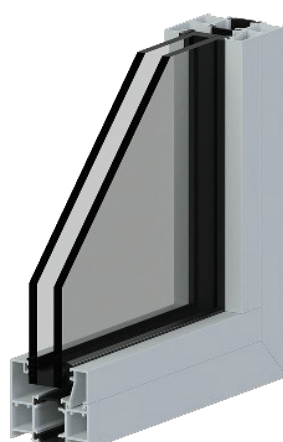
Bi-fold 1-1/2" recessed sill with drainage



Bi-fold 3/4" recessed sill no drainage



Bi-fold Alum Ext. Wood Int. Panel



Bi-fold Alum Ext. Alum Int. Panel