



New Next Dimension Field Mull Procedure



- **Work Safe!** Always wear proper eye and hearing protection when installing or adjusting Windsor products.
- **Use Power Tools Properly!** To avoid personal injury, always follow manufacturer's instructions for safe operation of power tools.

<u>Materials</u>	<u>Part Number</u>
------------------	--------------------

Standard ½" Mull Cover - 13ft (Interior & Exterior):

- | | |
|--------------|----------|
| • White | 10139511 |
| • Clay | 10139512 |
| • Lami Black | 10139513 |

Aluminum Reinforcement:

- | | |
|----------------|----------|
| • Windows | 10133464 |
| • Narrow Doors | 10128049 |

- | | |
|------------------------|----------|
| #8 x 7/8" Screw | 10157187 |
|------------------------|----------|

Drip Cap:

- | | |
|--------------|----------|
| • White | 10127912 |
| • Clay | 10127913 |
| • Lami Black | 10127914 |

4" Vinyl Tape – 108ft:

- | | |
|--|----------|
| • White | 10054655 |
| • Clear (Clay/Laminated/Painted Units) | 10054596 |

Silicone – 10.3oz Tube:

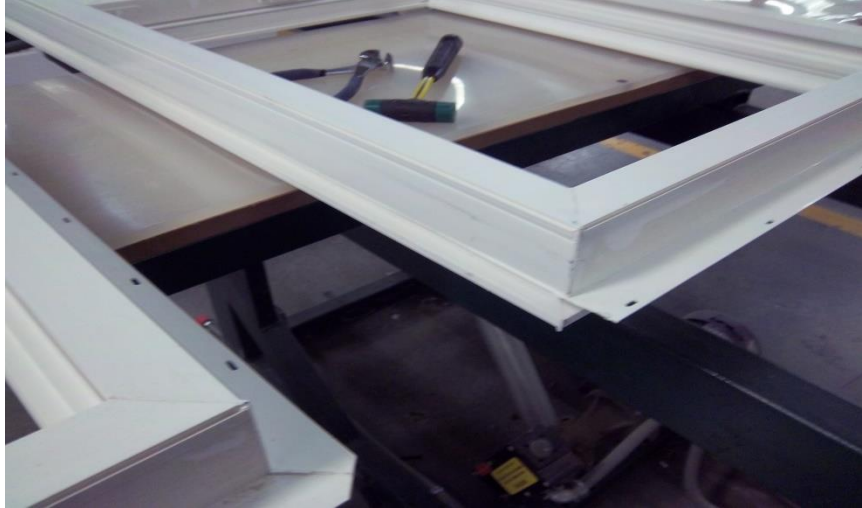
- | | |
|---------|----------|
| • White | 10052865 |
| • Clay | 10052962 |
| • Black | 10052962 |

Tools Required:

Utility Knife
Cutting Pliers
Rubber Mallet
Drill
3/16" Drill Bit
Screwdriver
Caulk Gun
Chisel
Chop saw

Field Mull Instructions

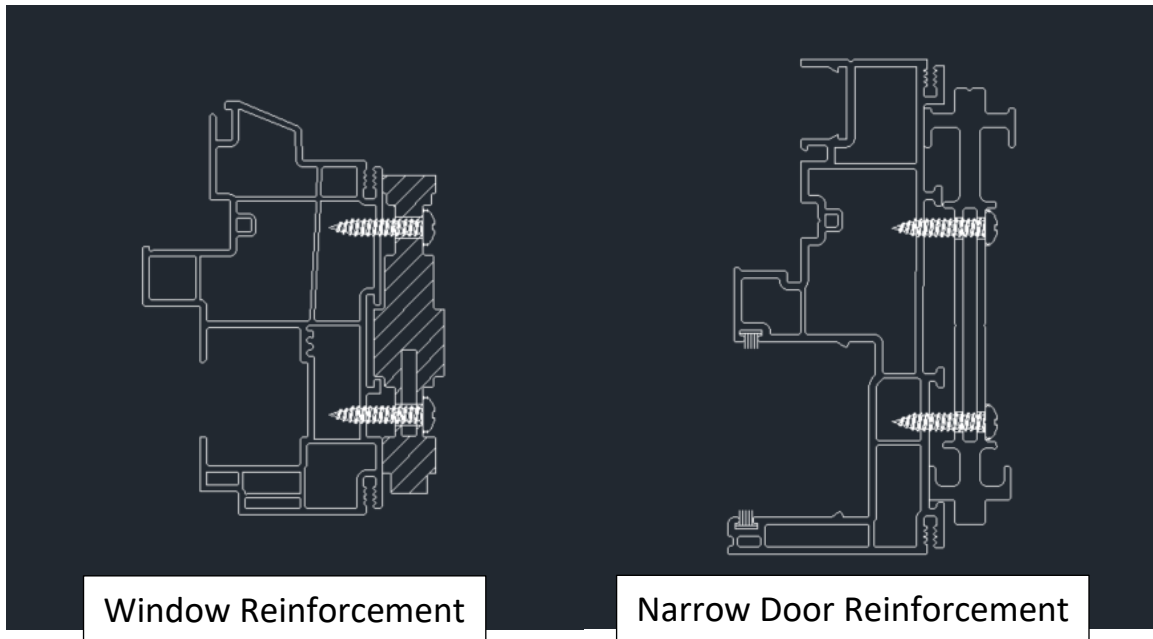
- 1) Remove the nail fin on the side to be mullled on both windows using a utility knife. Lay the units side by side with the interior facing up.



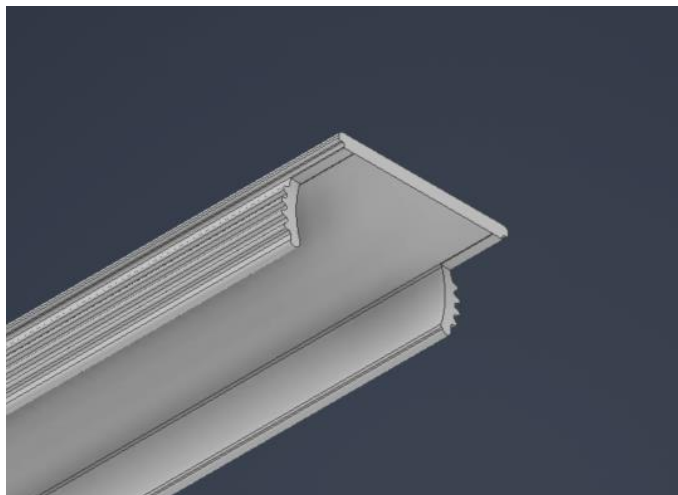
- 2) Clean out excess weld material at all 4 corners to be mullled using a chisel and a rubber mallet.



- 3) Predrill alternating holes along the two grooves on the reinforcement using a 3/16" drill bit. The holes should be about 8" apart from each other going across the cut length.
- 4) Place the reinforcement on the frame so that it looks like the below figure. The reinforcement should be placed 1" above the bottom edge of the frame. Using a screwdriver, apply #8 x 7/8" screws through the holes in the reinforcement and into the frame.



- 5) Cut the mull cover to correct length using a chop saw (Cut Length = Unit RO – ½").
- 6) Using a utility knife or cutting pliers, cut the legs off each end of mull cover as shown below to provide clearance over accessory groove and any excess weld material.



- 7) Place next to other unit(s) making sure to leave an appropriate gap for the mull. Place a long piece of 4" vinyl tape on each end of the mull. Make sure tape is long enough to completely cover the gap between units. Leave tape as shown below.



- 8) Using a caulk gun apply a 1/8" bead of silicone to the tape in the gap between the nail fins (see below). Fold the tape over the nail fin and make sure there are no bubbles. Press down on the gap between the nail fins to disperse silicone and minimize height of silicone addition. Remove extra tape on interior and exterior using a utility knife.



- 9) Apply a 1/8" bead of silicone to each unit in the exterior frame accessory groove as shown below:



- 10) Drive in the mull cover using a rubber mallet as shown below.



- 11) Make sure the mull cover extends the full length of the unit.
- 12) Flip the unit 180 degrees so you have access to the interior and the mull cavity.
- 13) Fill the ends of each mull cavity with 1" of silicone. **Important: No voids or pinholes allowed!**



- 14) Apply a 1/8" bead of silicone to interior frame accessory groove.



- 15) Apply interior mull cover that has been notched and cut to proper length.
- 16) Cut the drip cap to correct length using a chop saw (Cut length = RO width – 1/2") and apply to top of the configuration.

- 17) Field Mull is complete! If you have any questions, please contact Windsor Windows & Doors directly at 1-800-205-5665. Or you can submit a form online at <https://www.windsorwindows.com/contact-us> and one of our window specialists will promptly answer your question.