

INSTALLATION NOTES:

1. ONE (1) INSTALLATION ANCHOR IS REQUIRED AT EACH ANCHOR LOCATION, UNLESS OTHERWISE SHOWN.
2. THE NUMBER OF INSTALLATION ANCHORS DEPICTED IS THE MINIMUM NUMBER OF ANCHORS TO BE USED FOR PRODUCT INSTALLATION OF THE MAXIMUM SIZE LISTED.
3. INSTALL INDIVIDUAL INSTALLATION ANCHORS WITHIN A TOLERANCE OF ±1/2 INCH BASED ON QUANTITIES IN DP CHARTS NOT TO EXCEED THE DEPICTED LOCATION & SPACING IN THE ANCHOR LAYOUT DETAILS (I.E., WITHOUT CONSIDERATION OF TOLERANCES). TOLERANCES ARE NOT CUMULATIVE FROM ONE INSTALLATION ANCHOR TO THE NEXT
4. SHIM AS REQUIRED AT EACH INSTALLATION ANCHOR WITH LOAD BEARING SHIM(S). MAXIMUM ALLOWABLE SHIM STACK TO BE 1/4 INCH AT THE HEAD AND SILL AND 3/8 INCH AT THE JAMBS. SHIM WHERE SPACE OF 1/16 INCH OR GREATER OCCURS. SHIM(S) SHALL BE CONSTRUCTED OF HIGH DENSITY PLASTIC OR BETTER.
5. **THROUGH FRAME:** FOR INSTALLATION INTO WOOD FRAMING USE #10 WOOD SCREWS OF SUFFICIENT LENGTH TO ACHIEVE 1 1/2" MINIMUM EMBEDMENT INTO WOOD SUBSTRATE.
6. **THROUGH FRAME:** FOR INSTALLATION THROUGH 1X BUCK TO CONCRETE/MASONRY, OR DIRECTLY INTO CONCRETE/MASONRY, USE 1/4" DIAMETER ITW TAPCONS, ELCO ULTRACON, ELCO CRETE-FLEX OR HILTI KWIK-CON II OF SUFFICIENT LENGTH TO ACHIEVE 1 1/4" MINIMUM EMBEDMENT.
7. **THROUGH FRAME:** FOR INSTALLATION INTO METAL STUD OR APPROVED MULLION USE #10 GR. 5 SELF TAPPING SCREWS OF SUFFICIENT LENGTH TO ACHIEVE A MINIMUM OF 3 THREADS PENETRATION BEYOND METAL FRAME SUBSTRATE.
8. CLIPS SHALL BE FASTENED TO THE WINDOW FRAME WITH (2) #8 X 5/8" SCREWS. CLIPS ARE 20 GAUGE (0.063" THICKNESS) F_y=33 KSI MIN STEEL WITH OVERALL DIMENSIONS OF 1.5" WIDE, 7.813" ALONG THE LONG LEG, AND 1.942" ALONG THE SHORT LEG.
9. **CLIP ANCHOR:** FOR INSTALLATION INTO METAL STUD USE (2) #8 GR. 5 SELF-TAPPING SCREWS PER CLIP OF SUFFICIENT LENGTH TO ACHIEVE 3 THREADS MINIMUM PENETRATION BEYOND THE METAL STRUCTURE.
10. **CLIP ANCHOR:** FOR INSTALLATION INTO WOOD FRAMING USE (2) #8 WOOD SCREWS PER CLIP OF SUFFICIENT LENGTH TO ACHIEVE 1 1/2 INCH MINIMUM EMBEDMENT INTO WOOD SUBSTRATE.
11. **NAIL FIN:** FOR INSTALLATION INTO WOOD FRAMING USE #8 WOOD SCREWS OR USE 10D COMMON NAIL OR 11 GAUGE ROOFING NAIL PER LOCATION OF SUFFICIENT LENGTH TO ACHIEVE 1 1/2 INCH MINIMUM EMBEDMENT INTO WOOD SUBSTRATE.
12. **NAIL FIN:** FOR INSTALLATION INTO METAL STUD OR APPROVED MULLION USE #8 GR. 5 SELF TAPPING SCREWS OF SUFFICIENT LENGTH TO ACHIEVE A MINIMUM OF 3 THREADS PENETRATION BEYOND METAL FRAME SUBSTRATE.
13. MINIMUM EMBEDMENT AND EDGE DISTANCE EXCLUDE WALL FINISHES, INCLUDING BUT NOT LIMITED TO STUCCO, FOAM, BRICK VENEER, AND SIDING.
14. INSTALLATION ANCHORS AND ASSOCIATED HARDWARE MUST BE MADE OF CORROSION RESISTANT MATERIAL OR HAVE A CORROSION RESISTANT COATING.
15. FOR GROUT FILLED BLOCK, DO NOT INSTALL INSTALLATION ANCHORS INTO MORTAR JOINTS. EDGE DISTANCE IS MEASURED FROM FREE EDGE OF BLOCK OR EDGE OF MORTAR JOINT INTO FACE SHELL OF BLOCK.
16. INSTALLATION ANCHORS SHALL BE INSTALLED IN ACCORDANCE WITH ANCHOR MANUFACTURER'S INSTALLATION INSTRUCTIONS, AND ANCHORS SHALL NOT BE USED IN SUBSTRATES WITH STRENGTHS LESS THAN THE MINIMUM STRENGTH SPECIFIED BY THE ANCHOR MANUFACTURER.

WINDSOR WINDOWS & DOORS

PRO FIXED FRAME

(NON-IMPACT)(NON-HVHZ)

INSTALLATION NOTES (CONTINUED):

17. INSTALLATION ANCHOR CAPACITIES FOR PRODUCTS HEREIN ARE BASED ON SUBSTRATE MATERIALS WITH THE FOLLOWING PROPERTIES:
- A. WOOD - MINIMUM SPECIFIC GRAVITY OF 0.55.
- B. CONCRETE -MINIMUM COMPRESSIVE STRENGTH OF 3000 PSI.
- C. GROUT-FILLED CMU- UNIT STRENGTH CONFORMS TO ASTM C-90 WITH MINIMUM COMPRESSIVE STRENGTH OF 2000 PSI AND GROUT CONFORMS TO ASTM C 476, MINIMUM GROUT COMPRESSIVE STRENGTH OF 2000 PSI.
- D. STEEL - MINIMUM YIELD STRENGTH OF 33 KSI. MINIMUM 18 GA. WALL THICKNESS.
- E. ALUMINUM - MINIMUM ALLOY 6063-T5. MINIMUM WALL THICKNESS OF 1/8" (0.125").

GENERAL NOTES:

1. THE PRODUCT SHOWN HEREIN IS DESIGNED AND MANUFACTURED TO COMPLY WITH THE CURRENT FLORIDA BUILDING CODE (FBC), EXCLUDING HVHZ AND HAS BEEN EVALUATED ACCORDING TO THE FOLLOWING:
- AAMA/WDMA/CSA 101/I.S.2/A440-11/17
2. ADEQUACY OF THE EXISTING STRUCTURAL CONCRETE/MASONRY AND 2X FRAMING AS A MAIN WIND FORCE RESISTING SYSTEM CAPABLE OF WITHSTANDING AND TRANSFERRING APPLIED PRODUCT LOADS TO THE FOUNDATION IS THE RESPONSIBILITY OF THE ENGINEER OR ARCHITECT OF RECORD FOR THE PROJECT OF INSTALLATION.
3. 1X AND 2X BUCKS (WHEN USED) SHALL BE DESIGNED AND ANCHORED TO PROPERLY TRANSFER ALL LOADS TO THE STRUCTURE. BUCK DESIGN AND INSTALLATION IS THE RESPONSIBILITY OF THE ENGINEER OR ARCHITECT OF RECORD FOR THE PROJECT OF INSTALLATION.
4. THE INSTALLATION DETAILS DESCRIBED HEREIN ARE GENERIC AND MAY NOT REFLECT ACTUAL CONDITIONS FOR A SPECIFIC SITE. IF SITE CONDITIONS CAUSE INSTALLATION TO DEVIATE FROM THE REQUIREMENTS DETAILED HEREIN, A LICENSED ENGINEER OR ARCHITECT SHALL PREPARE SITE SPECIFIC DOCUMENTS FOR USE WITH THIS DOCUMENT IN NON-HVHZ AREAS.
5. APPROVED IMPACT PROTECTIVE SYSTEM **IS REQUIRED** ON THIS PRODUCT.
6. WINDOW FRAME MATERIAL: VINYL
7. GLASS SHALL MEET THE REQUIREMENTS OF ASTM E 1300 GLASS CHARTS. SEE SHEET 3 FOR GLAZING DETAILS.

| TABLE OF CONTENTS | |
|-------------------|---|
| SHEET | SHEET DESCRIPTION |
| 1 | INSTALLATION & GENERAL NOTES |
| 2 | ELEVATIONS |
| 3 | ANCHOR LAYOUTS & GLAZING DETAILS |
| 4 | NAIL FIN INSTALLATION SECTIONS (BRICKMOULD FRAME) |
| 5 | NAIL FIN INSTALLATION SECTIONS (STANDARD FRAME) |
| 6 | TRU- FRAME INSTALLATION SECTIONS (STANDARD FRAME) |
| 7 | TRU-FRAME INSTALLATION SECTION (BRICKMOULD FRAME) |
| 8 | CLIP INSTALLATION SECTIONS (BRICKMOULD FRAME) |
| 9 | CLIP INSTALLATION SECTIONS (STANDARD FRAME) |

| DESIGN PRESSURE TABLE | | | | | | |
|-----------------------|--------|-----------------|---------------|------------|--------------------------------|-----------------------|
| TYP. OVERALL SIZE | | DESIGN PRESSURE | CONFIGURATION | FRAME TYPE | INSTALLATION METHOD | MISSILE IMPACT RATING |
| WIDTH | HEIGHT | | | | | |
| 95 ½" | 59 ½" | +35/-35 PSF | "O" | BRMLD | THROUGH FRAME, NAIL FIN & CLIP | NON - IMPACT |
| 71 ½" | 77 ½" | +35/-35 PSF | | BRMLD | | |
| 41 ½" | 53 ½" | +50/-50 PSF | | STD | | |
| 71 ½" | 83 ½" | +35/-35 PSF | | BRMLD | | |



WINDSOR WINDOWS & DOORS
900 S. 19TH STREET.
WEST DES MOINES, IA 50265
PH: (515)223-6660 FAX: (515)224-1938

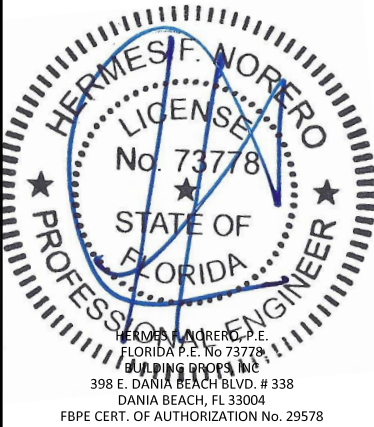
TITLE: PRO FIXED FRAME (NON-IMPACT) (NON-HVHZ)
INSTALLATION AND GENERAL NOTES

PREPARED BY: BUILDING DROPS, INC.
398 E. DANIA BEACH BLVD., STE. 338
DANIA BEACH, FL 33004
PH: (954)399-8478
FAX: (954)744-4738
WEB: www.buildingdrops.com



| REMARKS | BY | DATE |
|---------|----|------|
| | | |
| | | |
| | | |
| | | |

THE INSTALLATION DETAILS DESCRIBED HERE IN ARE GENERIC AND MAY NOT REFLECT ACTUAL CONDITIONS FOR A SPECIFIC SITE. IF SITE CONDITIONS CAUSE INSTALLATION TO DEVIATE FROM THE REQUIREMENTS DETAILED HEREIN, A LICENSED ENGINEER OR ARCHITECT SHALL PREPARE SITE SPECIFIC DOCUMENTS FOR USE WITH THIS DOCUMENT.



FL14873

DATE: 11.11.20

DWG. BY: ER
CHK. BY: HFN

SCALE: NTS

DWG. #: WWD065

SHEET: 1 OF 9



WINDSOR WINDOWS
& DOORS
900 S. 19TH STREET.
WEST DES MOINES, IA 50265
PH: (515)223-6660 FAX: (515)224-1938

TITLE: PRO FIXED FRAME
(NON-IMPACT) (NON-HVHZ)

ELEVATIONS

PREPARED BY:
BUILDING DROPS, INC.
398 E. DANIA BEACH BLVD., STE. 338
DANIA BEACH, FL 33004
PH: (954)399-8478
FAX: (954)744-4738
WEB: www.buildingdrops.com



| REMARKS | BY | DATE |
|---------|----|------|
| | | |
| | | |
| | | |
| | | |

THE INSTALLATION DETAILS DESCRIBED HERE IN ARE GENERIC
AND MAY NOT REFLECT ACTUAL CONDITIONS FOR A SPECIFIC
SITE. IF SITE CONDITIONS CAUSE INSTALLATION TO DEVIATE
FROM THE REQUIREMENTS DETAILED HEREIN, A LICENSED
ENGINEER OR ARCHITECT SHALL PREPARE SITE SPECIFIC
DOCUMENTS FOR USE WITH THIS DOCUMENT.



FL14873

DATE: 11.11.20

DWG. BY:
ER

CHK. BY:
HFN

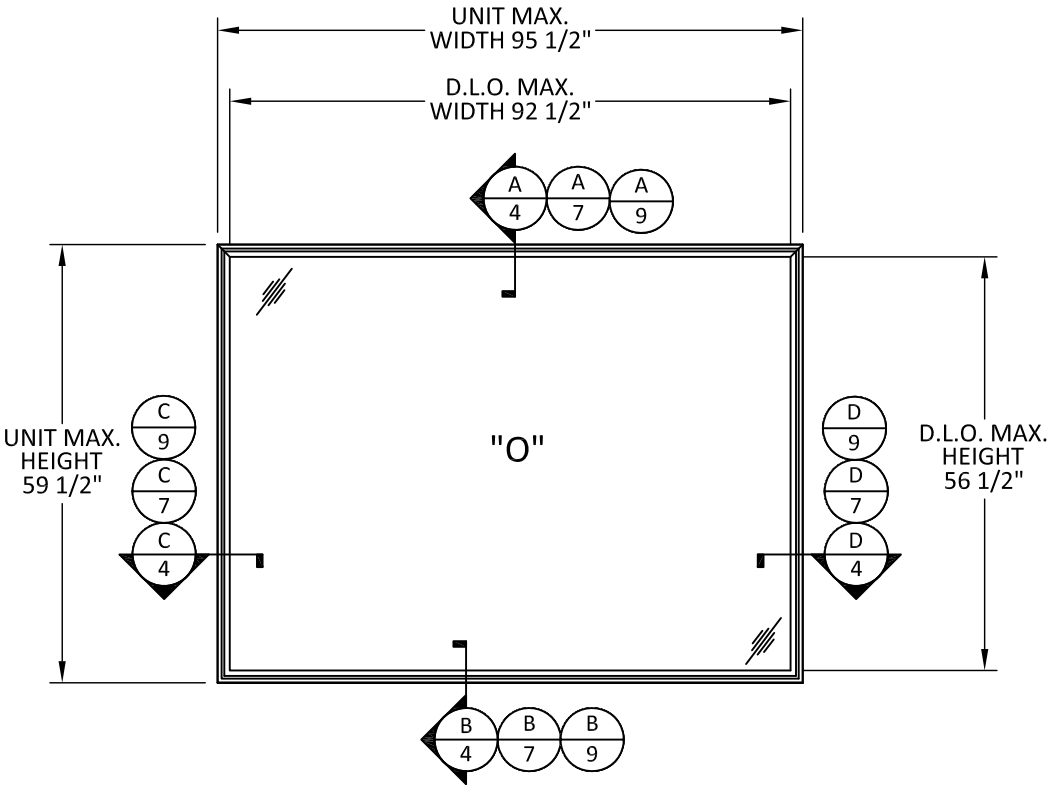
SCALE: NTS

DWG. #: WWD065

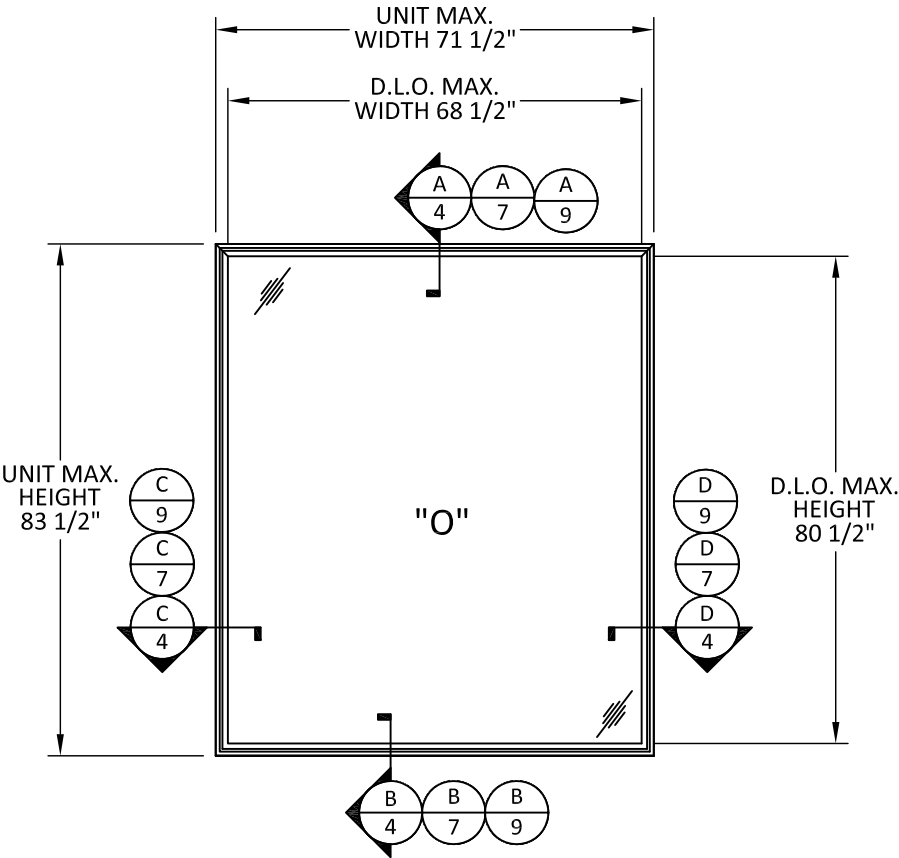
SHEET:

2

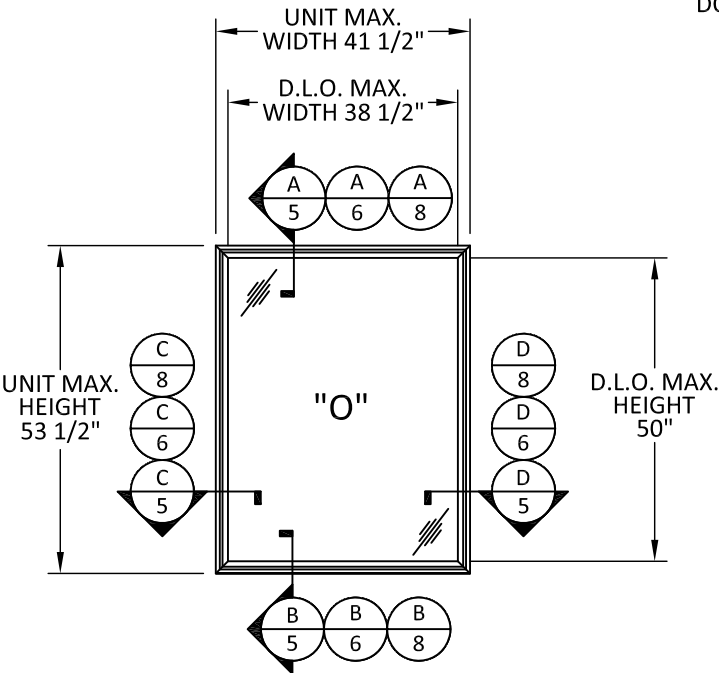
OF 9



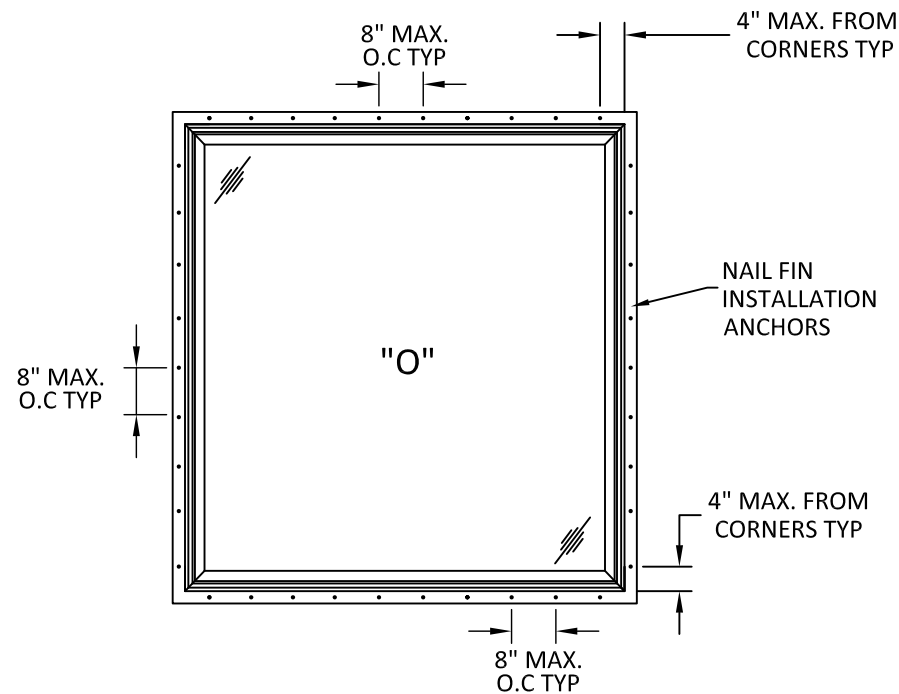
TYPICAL ELEVATION
DOUBLE HUNG PICTURE WINDOW
BRMLD FRAME



TYPICAL ELEVATION
DOUBLE HUNG PICTURE WINDOW
BRMLD FRAME

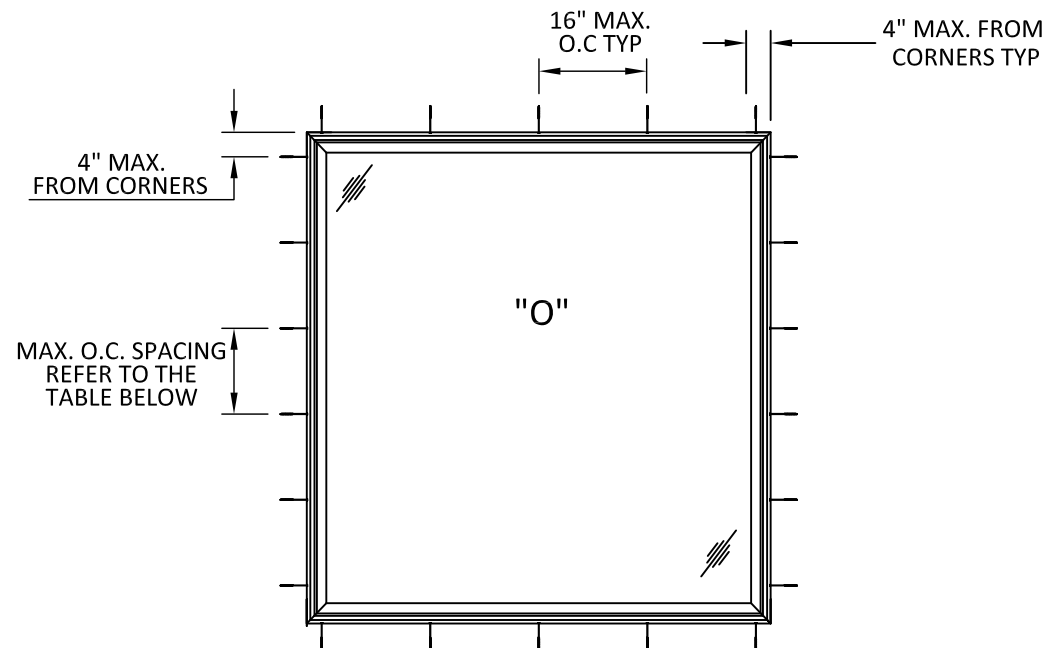


TYPICAL ELEVATION
DOUBLE HUNG PICTURE WINDOW
STD FRAME



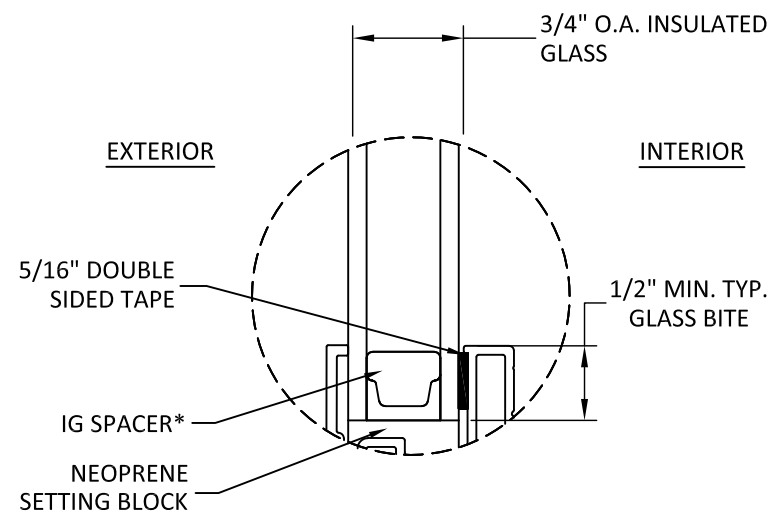
TYPICAL ANCHOR LAYOUT

NAIL FIN INSTALLATION
ALL SIZES



TYPICAL ANCHOR LAYOUT

CLIP OR THROUGH FRAME INSTALLATION
SEE TABLE BELOW FOR O.A. SIZES



GLAZING DETAIL

GLAZING NOTES:

1. GLASS TYPE & THICKNESS SHALL COMPLY WITH ASTM E1300 REQUIREMENTS AS WELL AS APPLICABLE SAFETY GLAZING REQUIREMENTS PER THE FBC. TEMPER AND SAFETY GLAZING REQUIREMENTS SHALL BE REVIEWED ON A SITE SPECIFIC BASIS.
2. SETTING BLOCK DUROMETER HARDNESS OF 70-90 (SHORE A) AS REFERENCED IN FBC CHAPTER 24.
3. SETTING BLOCKS TO BE LOCATED AT 1/4 SPAN LENGTH FOR GLASS WIDER THAN 36" AS PER FBC CHAPTER 24.
4. DESIGN PRESSURES MAY NOT EXCEED MAX VALUES IN DESIGN PRESSURE TABLES ON SHEET 1.

| DESIGN PRESSURE TABLE | | | | | |
|-----------------------|---------|-----------------|---------------|--------|---------------|
| TYP. OVERALL SIZE | | DESIGN PRESSURE | CONFIGURATION | | |
| WIDTH | HEIGHT | | | CLIP | THROUGH FRAME |
| 71 1/2" | 77 1/2" | +35/-35 PSF | "O" | 16.00" | 22.00" |
| 71 1/2" | 77 1/2" | +35/-35 PSF | "O" | 16.00" | 16.00" |



WINDSOR WINDOWS & DOORS

900 S. 19TH STREET.
WEST DES MOINES, IA 50265
PH: (515)223-6660 FAX: (515)224-1938

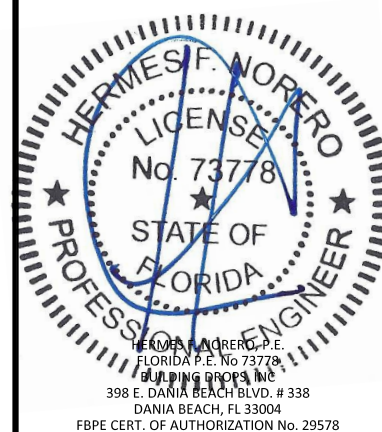
TITLE: PRO FIXED FRAME
(NON-IMPACT) (NON-HVHZ)
ANCHOR LAYOUTS
& GLAZING DETAIL

PREPARED BY:
BUILDING DROPS, INC.
398 E. DANIA BEACH BLVD., STE. 338
DANIA BEACH, FL 33004
PH: (954)399-8478
FAX: (954)744-4738
WEB: www.buildingdrops.com



| REMARKS | BY | DATE |
|---------|----|------|
| | | |
| | | |
| | | |
| | | |

THE INSTALLATION DETAILS DESCRIBED HERE IN ARE GENERIC AND MAY NOT REFLECT ACTUAL CONDITIONS FOR A SPECIFIC SITE. IF SITE CONDITIONS CAUSE INSTALLATION TO DEVIATE FROM THE REQUIREMENTS DETAILED HEREIN, A LICENSED ENGINEER OR ARCHITECT SHALL PREPARE SITE SPECIFIC DOCUMENTS FOR USE WITH THIS DOCUMENT.



FL14873

DATE: **11.11.20**

DWG. BY:
ER

CHK. BY:
HFN

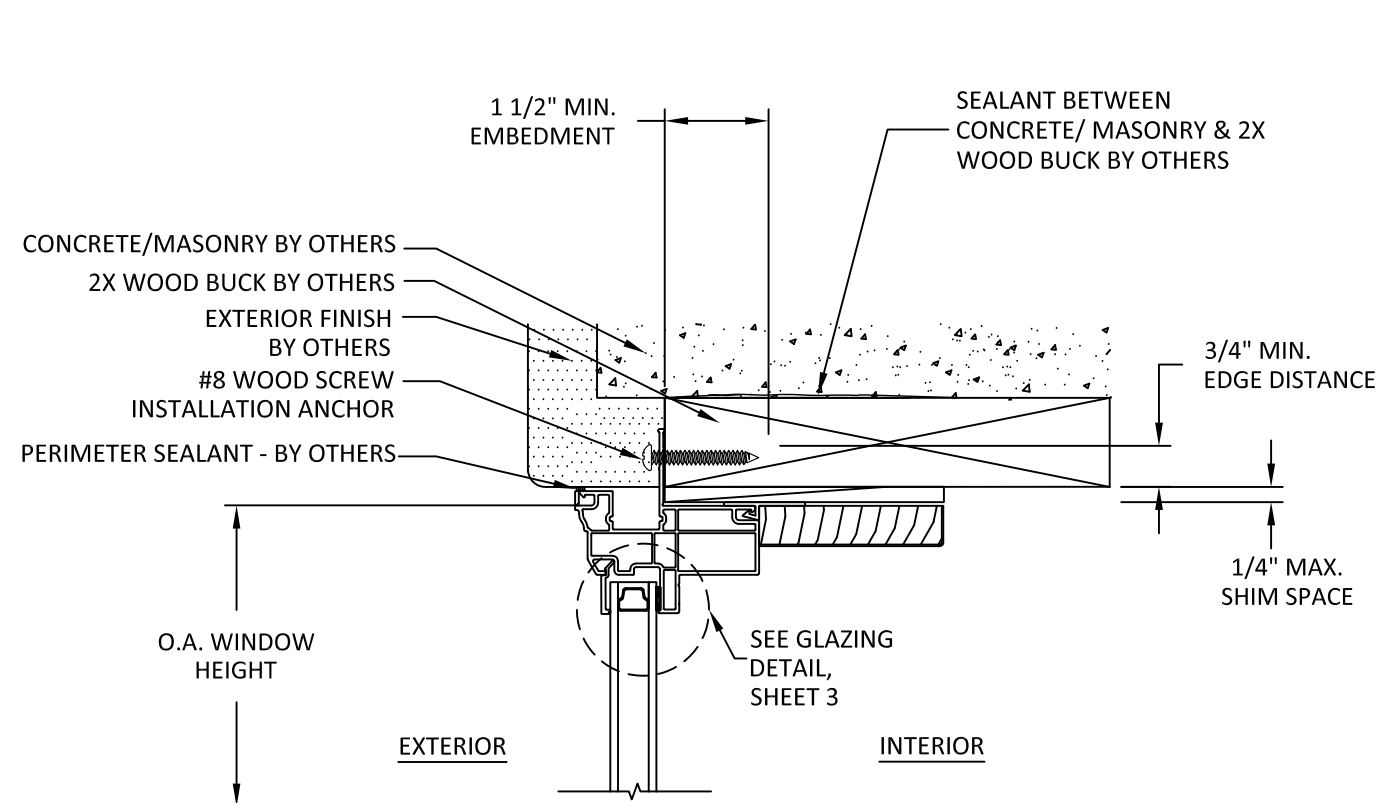
SCALE: **NTS**

DWG. #: **WWD065**

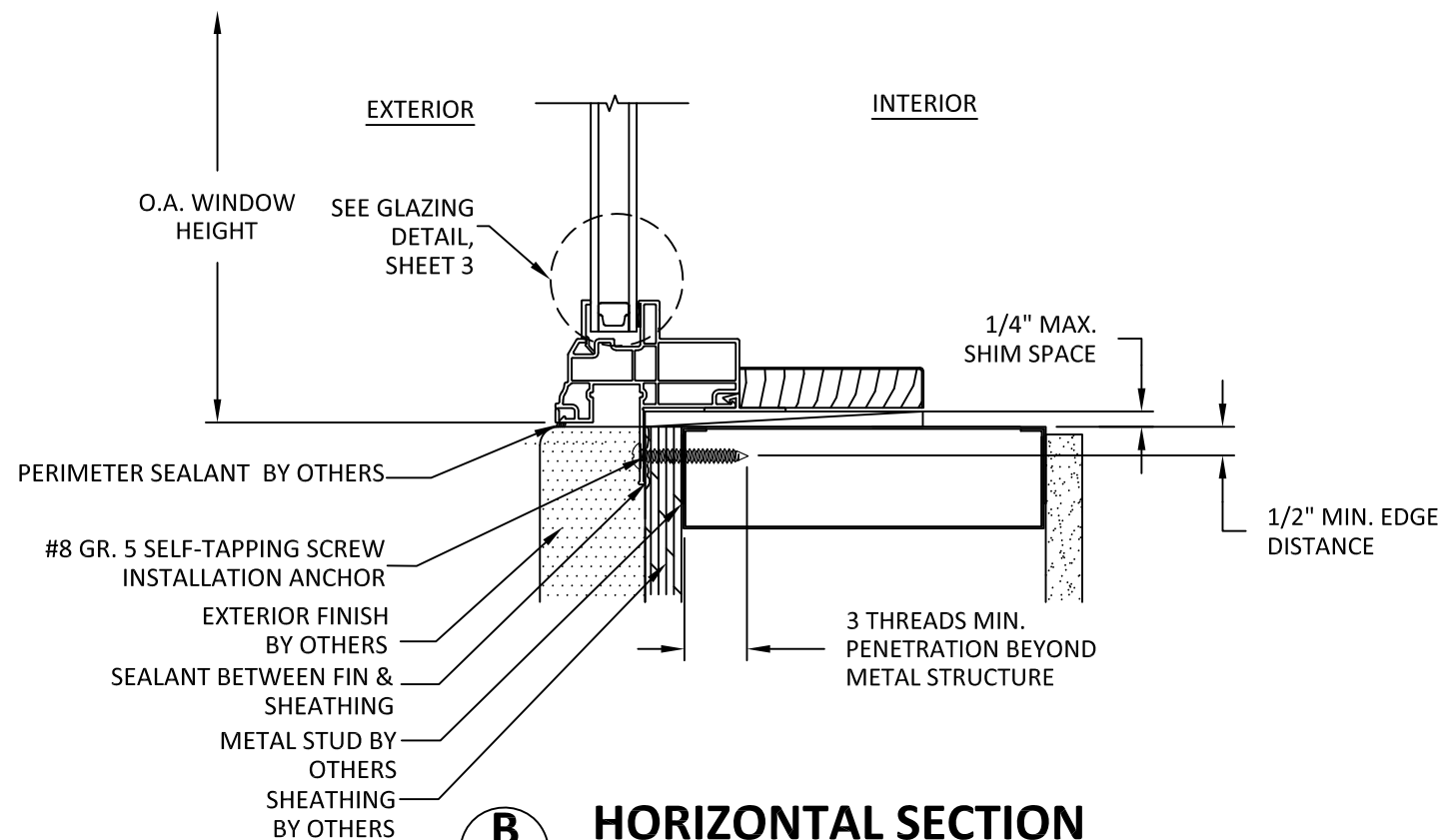
SHEET:

3

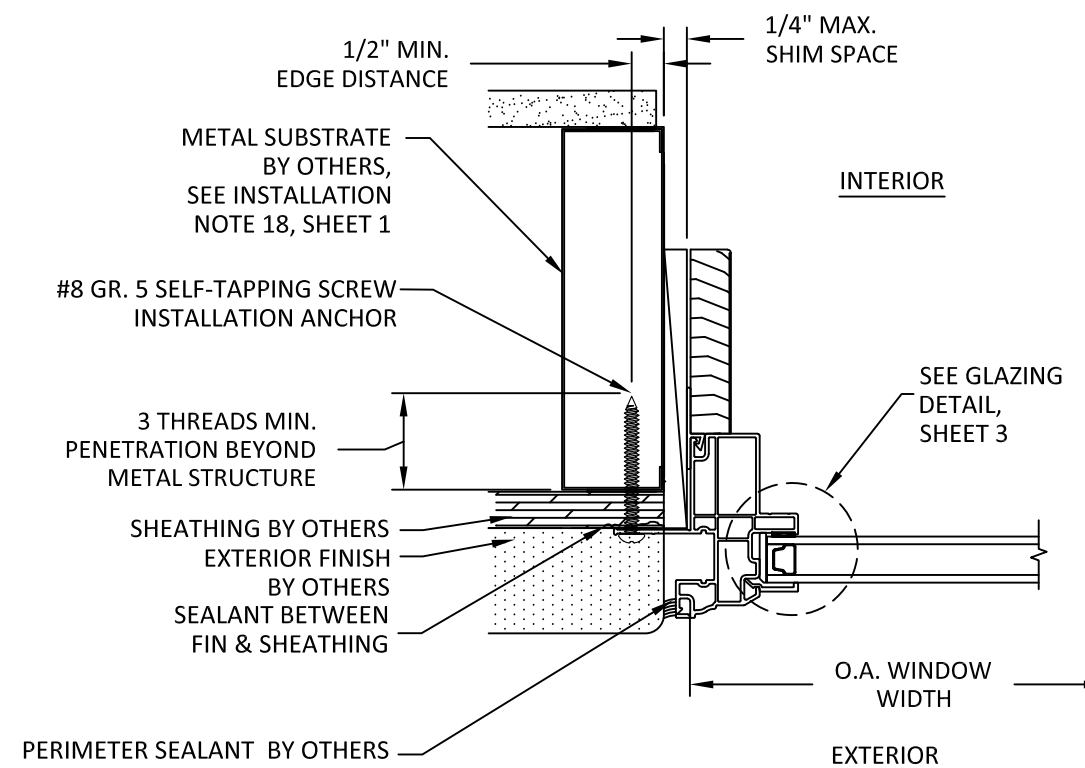
OF 9



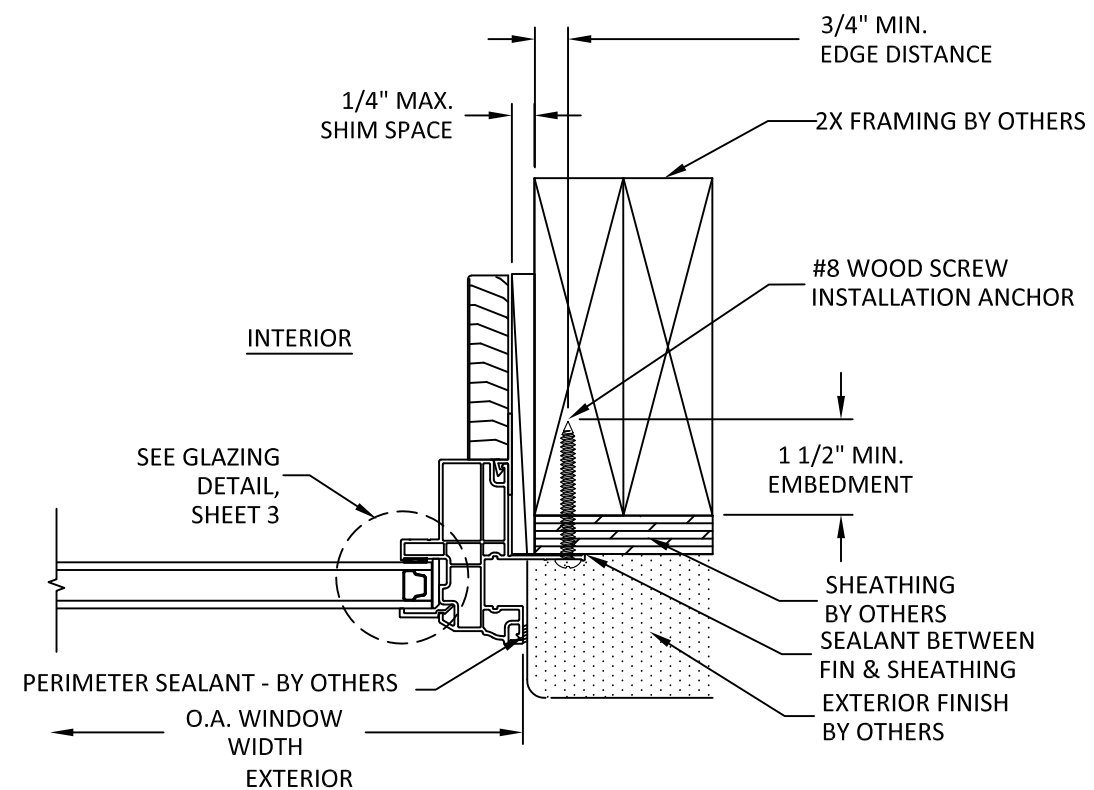
A
4 **VERTICAL SECTION**
BRICKMOULD FRAME - HEAD
NAIL FIN INSTALLATION



B
4 **HORIZONTAL SECTION**
BRICKMOULD FRAME - SILL
NAIL FIN INSTALLATION



C
4 **HORIZONTAL SECTION**
BRICKMOULD FRAME - JAMB
NAIL FIN INSTALLATION



D
4 **HORIZONTAL SECTION**
BRICKMOULD FRAME - JAMB
NAIL FIN INSTALLATION



WINDSOR WINDOWS & DOORS
900 S. 19TH STREET.
WEST DES MOINES, IA 50265
PH: (515)223-6660 FAX: (515)224-1938

TITLE: PRO FIXED FRAME
(NON-IMPACT) (NON-HVHZ)
NAIL FIN INSTALLATION SECTIONS
(BRICKMOULD FRAME)

PREPARED BY:
BUILDING DROPS, INC.
398 E. DANIA BEACH BLVD., STE. 338
DANIA BEACH, FL 33004
PH: (954)399-8478
FAX: (954)744-4738
WEB: www.buildingdrops.com

| REMARKS | BY | DATE |
|---------|----|------|
| | | |
| | | |
| | | |
| | | |

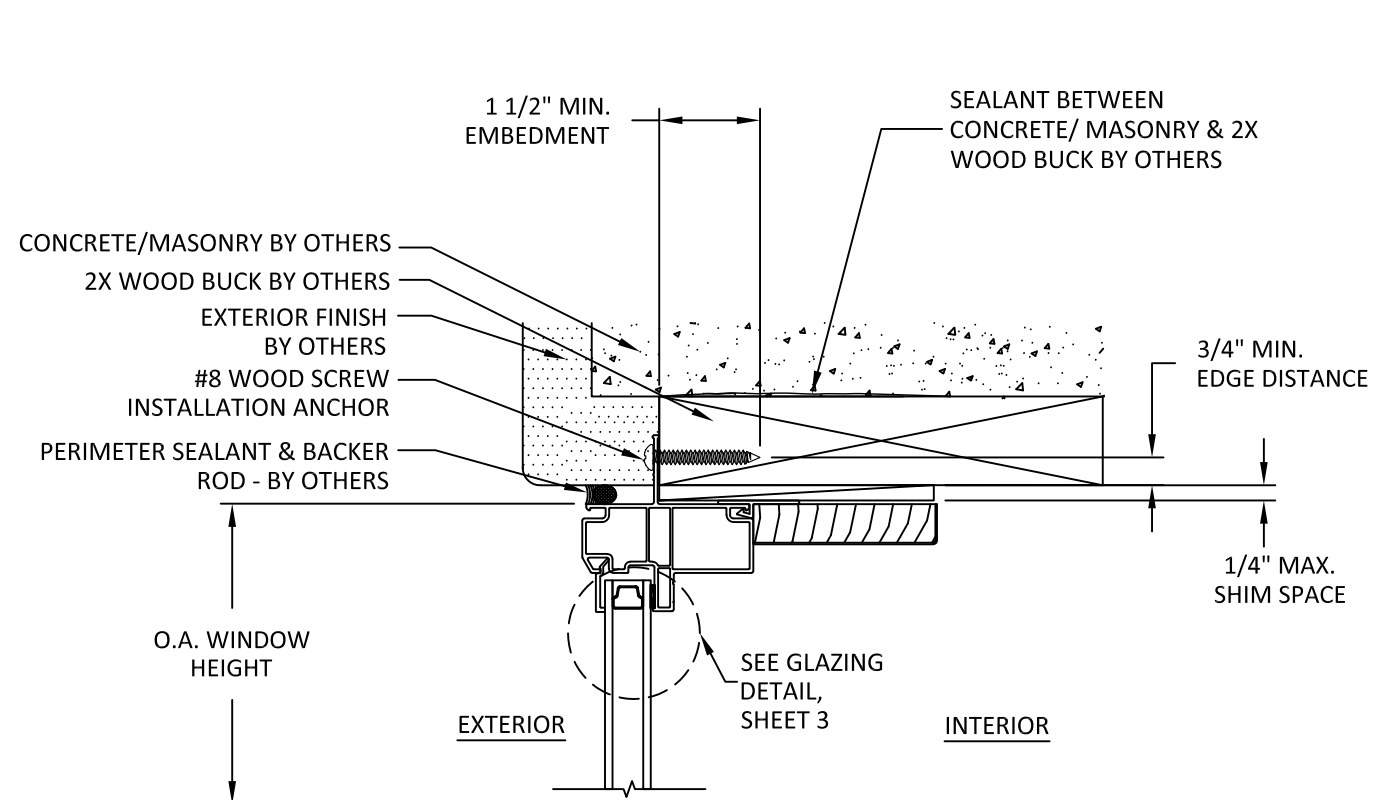
THE INSTALLATION DETAILS DESCRIBED HEREIN ARE GENERIC AND MAY NOT REFLECT ACTUAL CONDITIONS FOR A SPECIFIC SITE. IF SITE CONDITIONS CAUSE INSTALLATION TO DEVIATE FROM THE REQUIREMENTS DETAILED HEREIN, A LICENSED ENGINEER OR ARCHITECT SHALL PREPARE SITE SPECIFIC DOCUMENTS FOR USE WITH THIS DOCUMENT.



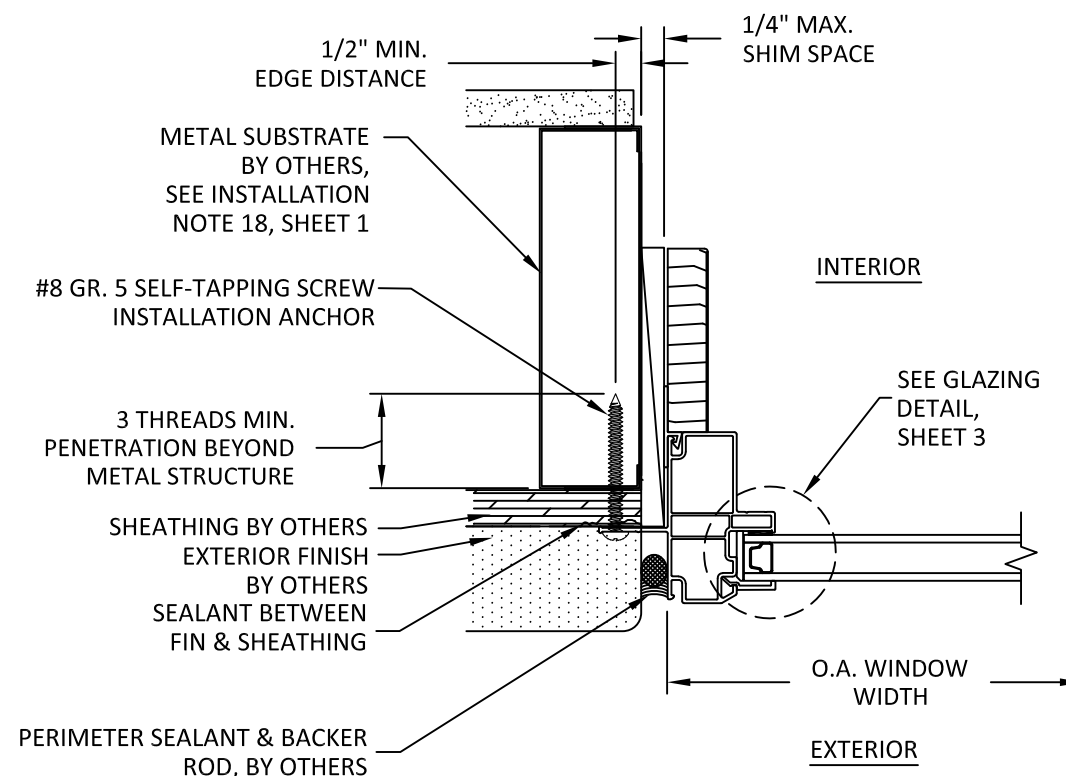
FL14873

DATE: **11.11.20**
DWG. BY: **ER** CHK. BY: **HFN**
SCALE: **NTS**
DWG. #: **WWD065**
SHEET:

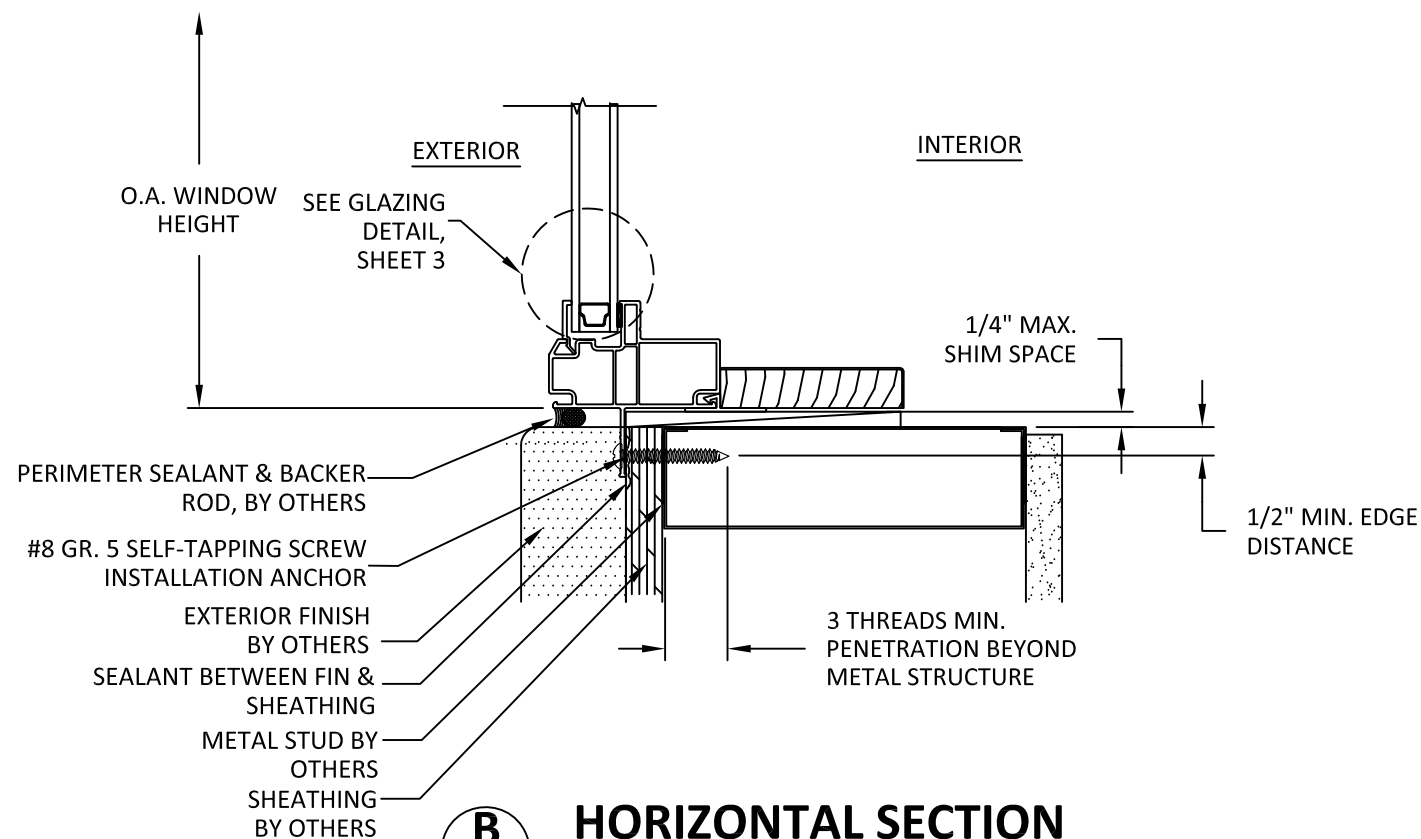
4
OF 9



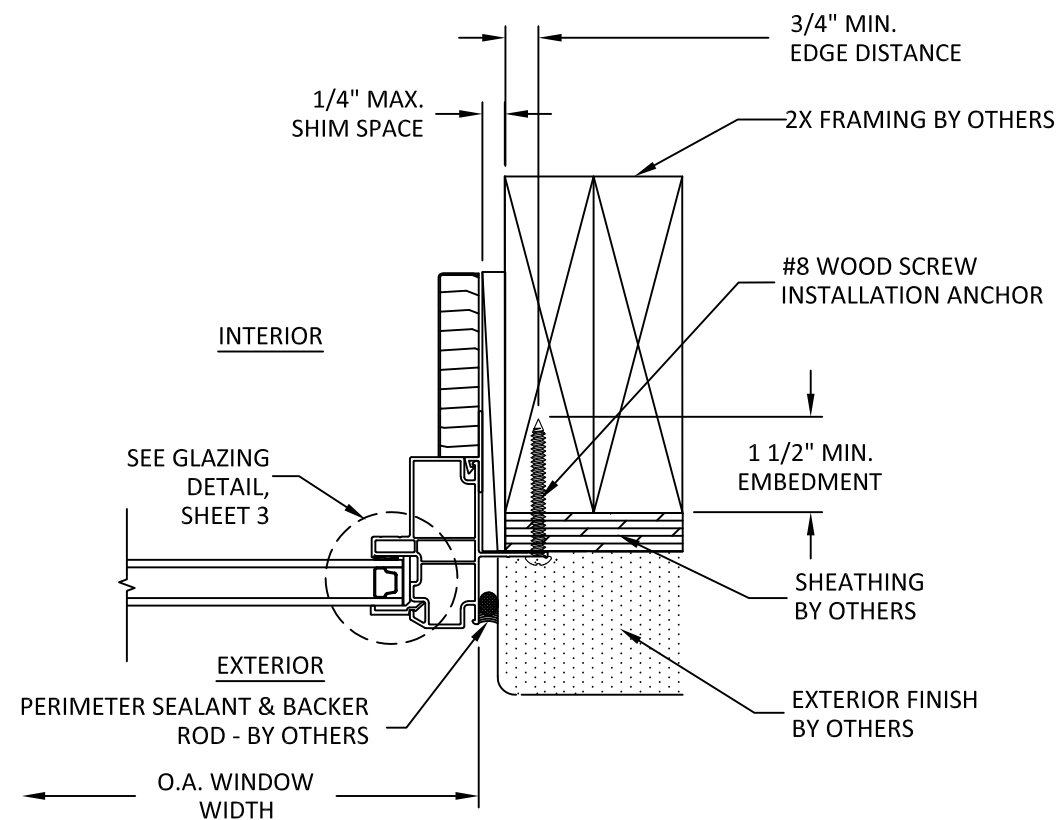
A
5 **VERTICAL SECTION**
STD FRAME - HEAD
NAIL FIN INSTALLATION



C
5 **HORIZONTAL SECTION**
STD FRAME - JAMB
NAIL FIN INSTALLATION



B
5 **HORIZONTAL SECTION**
STD FRAME - SILL
NAIL FIN INSTALLATION



D
5 **HORIZONTAL SECTION**
STD FRAME - JAMB
NAIL FIN INSTALLATION



**WINDSOR WINDOWS
& DOORS**
900 S. 19TH STREET.
WEST DES MOINES, IA 50265
PH: (515)223-6660 FAX: (515)224-1938

TITLE: PRO FIXED FRAME
(NON-IMPACT) (NON-HVHZ)

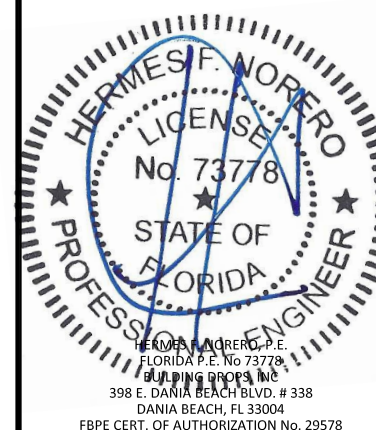
NAIL FIN INSTALLATION SECTIONS
(STANDARD FRAME)

PREPARED BY:
BUILDING DROPS, INC.
398 E. DANIA BEACH BLVD., STE. 338
DANIA BEACH, FL 33004
PH: (954)399-8478
FAX: (954)744-4738
WEB: www.buildingdrops.com



| REMARKS | BY | DATE |
|---------|----|------|
| | | |
| | | |
| | | |
| | | |

THE INSTALLATION DETAILS DESCRIBED HEREIN ARE GENERIC AND MAY NOT REFLECT ACTUAL CONDITIONS FOR A SPECIFIC SITE. IF SITE CONDITIONS CAUSE INSTALLATION TO DEVIATE FROM THE REQUIREMENTS DETAILED HEREIN, A LICENSED ENGINEER OR ARCHITECT SHALL PREPARE SITE SPECIFIC DOCUMENTS FOR USE WITH THIS DOCUMENT.



FL14873

DATE: **11.11.20**

DWG. BY:
ER

CHK. BY:
HFN

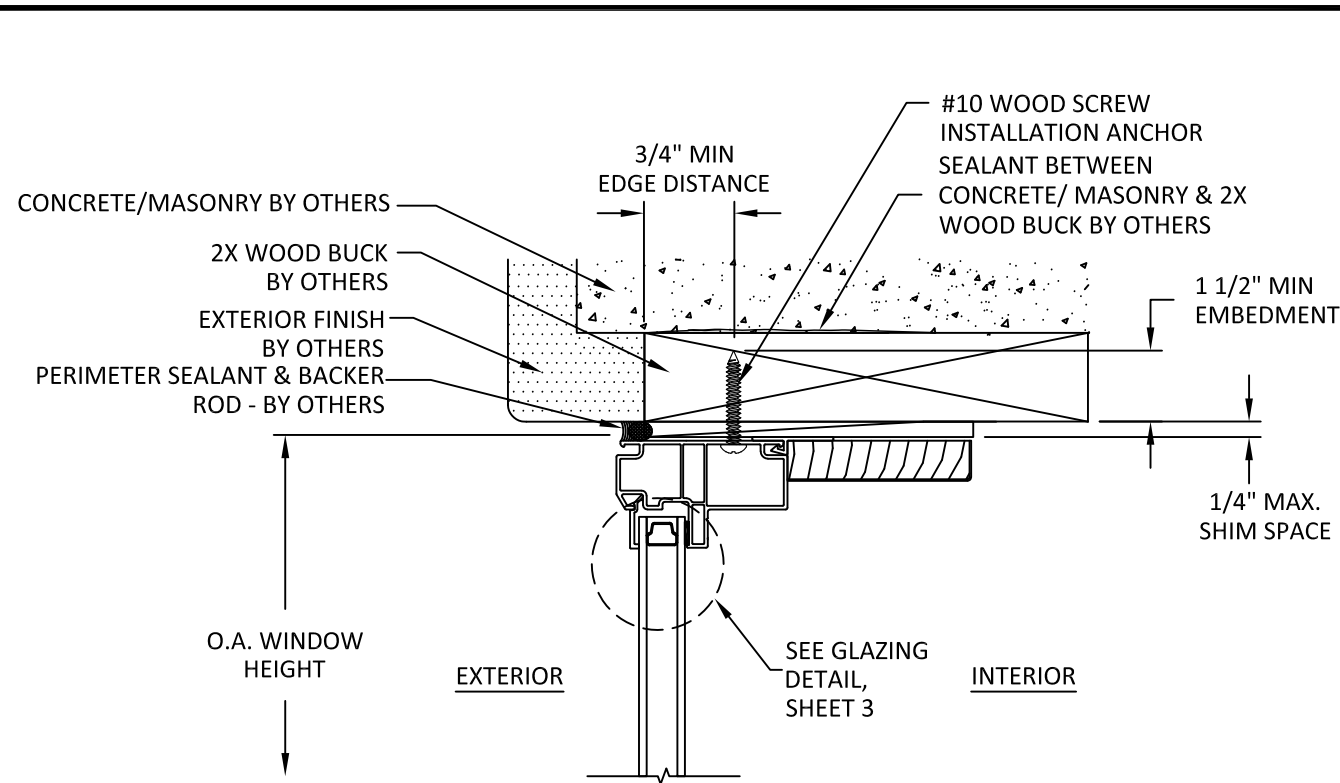
SCALE: **NTS**

DWG. #: **WWD065**

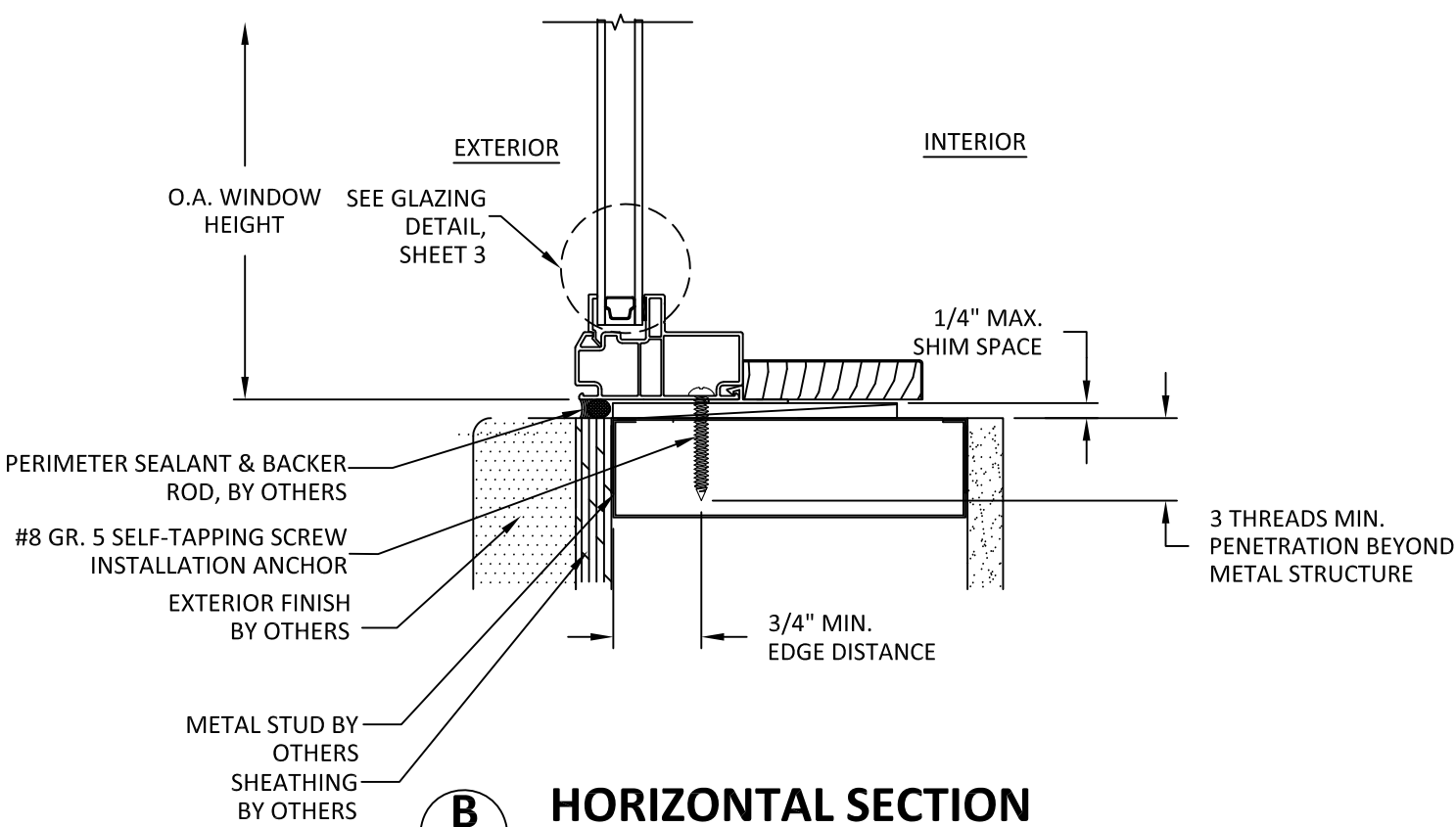
SHEET:

5

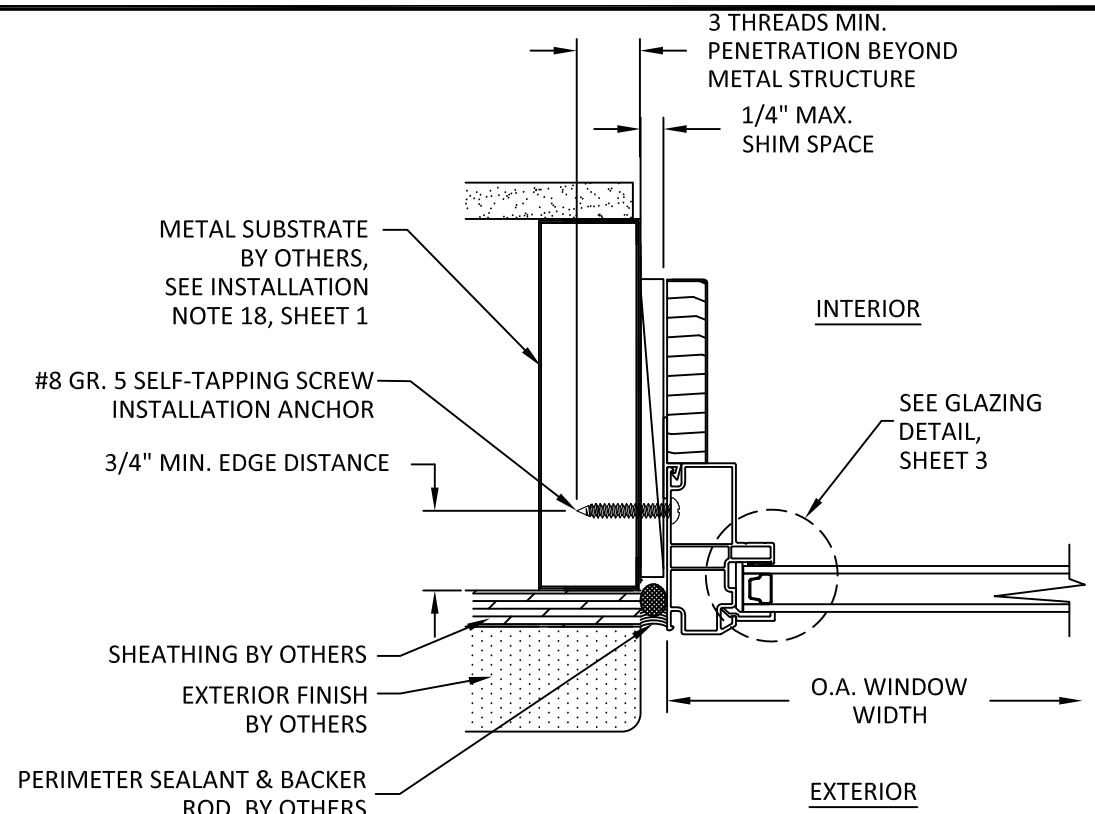
OF 9



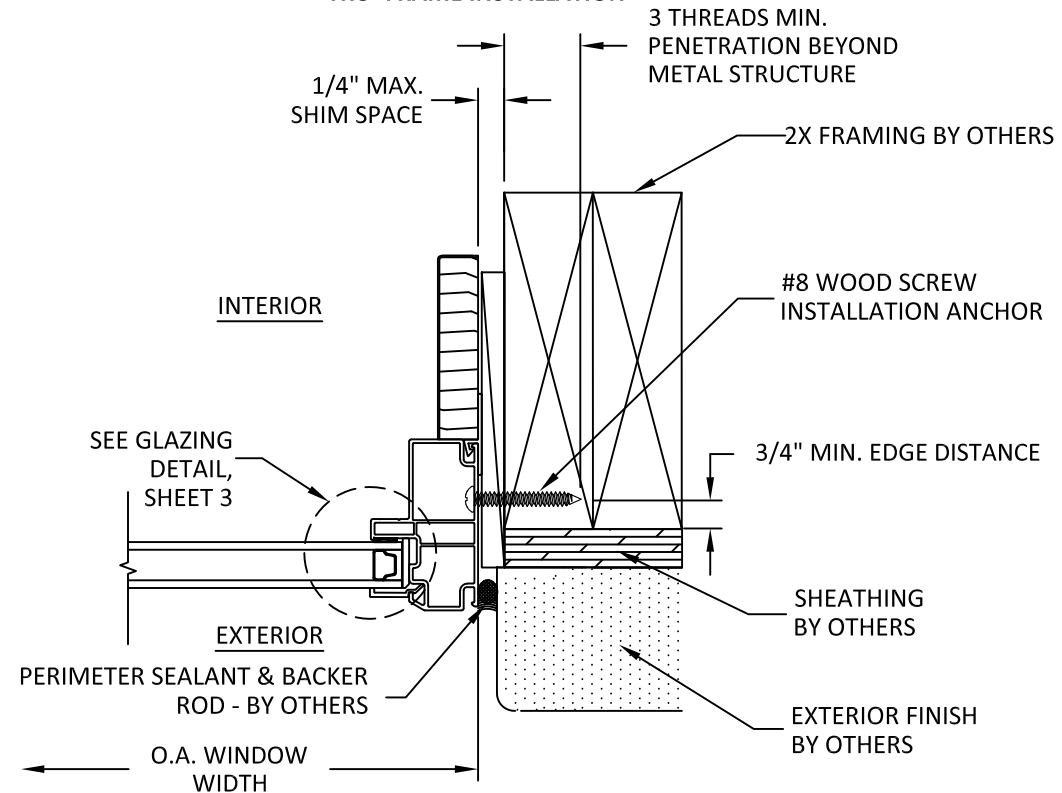
A
6 **VERTICAL SECTION**
STD FRAME - JAMB
TRU- FRAME INSTALLATION



B
6 **HORIZONTAL SECTION**
STD FRAME - SILL
TRU- FRAME INSTALLATION



C
6 **HORIZONTAL SECTION**
STD FRAME - JAMB
TRU- FRAME INSTALLATION



D
6 **HORIZONTAL SECTION**
STD FRAME - JAMB
TRU- FRAME INSTALLATION



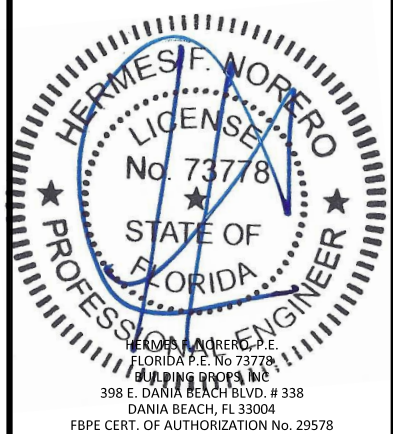
WINDSOR WINDOWS & DOORS
900 S. 19TH STREET.
WEST DES MOINES, IA 50265
PH: (515)223-6660 FAX: (515)224-1938

TITLE: PRO FIXED FRAME
(NON-IMPACT) (NON-HVHZ)
TRU- FRAME INSTALLATION SECTIONS
(STANDARD FRAME)

PREPARED BY:
BUILDING DROPS, INC.
398 E. DANIA BEACH BLVD., STE. 338
DANIA BEACH, FL 33004
PH: (954)399-8478
FAX: (954)744-4738
WEB: www.buildingdrops.com

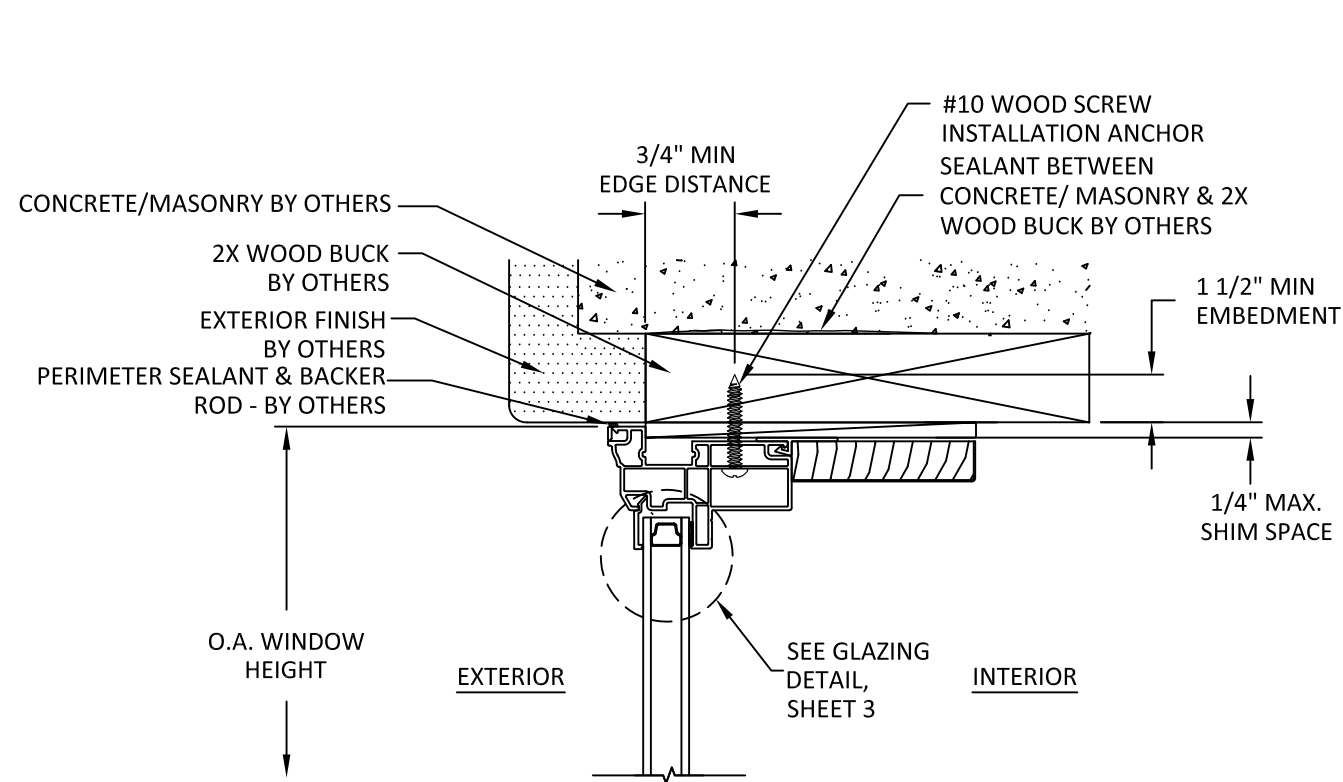
| REMARKS | BY | DATE |
|---------|----|------|
| | | |
| | | |
| | | |
| | | |

THE INSTALLATION DETAILS DESCRIBED HEREIN ARE GENERIC AND MAY NOT REFLECT ACTUAL CONDITIONS FOR A SPECIFIC SITE. IF SITE CONDITIONS CAUSE INSTALLATION TO DEVIATE FROM THE REQUIREMENTS DETAILED HEREIN, A LICENSED ENGINEER OR ARCHITECT SHALL PREPARE SITE SPECIFIC DOCUMENTS FOR USE WITH THIS DOCUMENT.

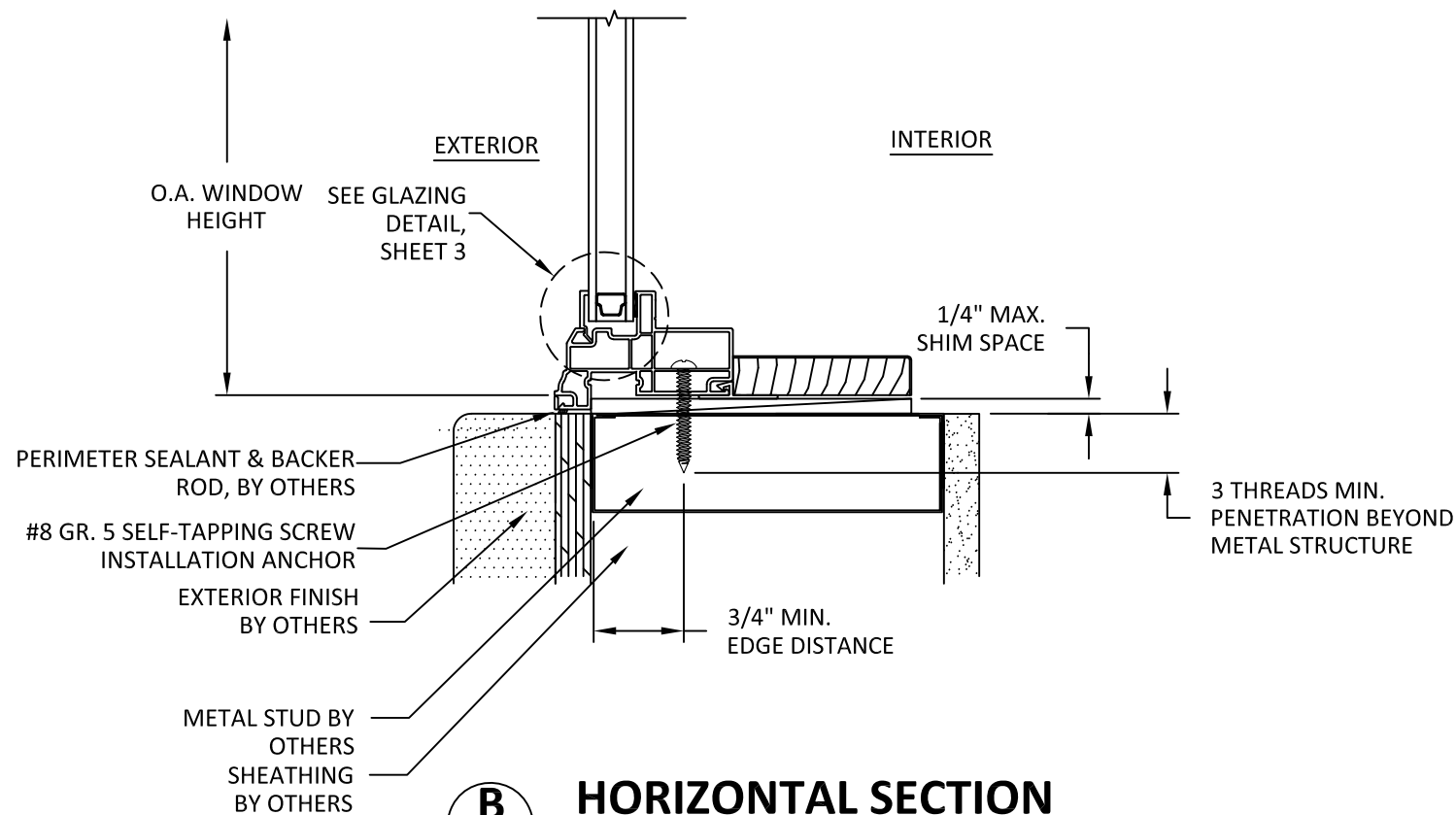


FL14873

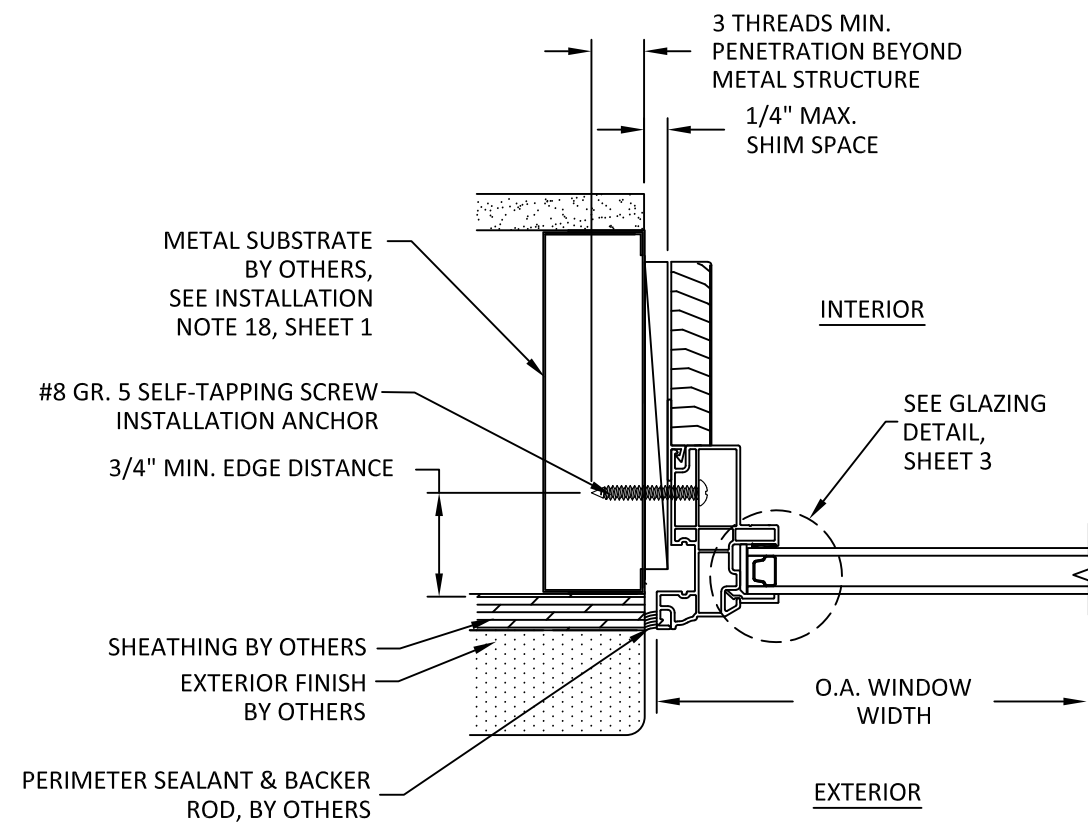
DATE: **11.11.20**
DWG. BY: **ER** CHK. BY: **HFN**
SCALE: **NTS**
DWG. #: **WWD065**
SHEET:



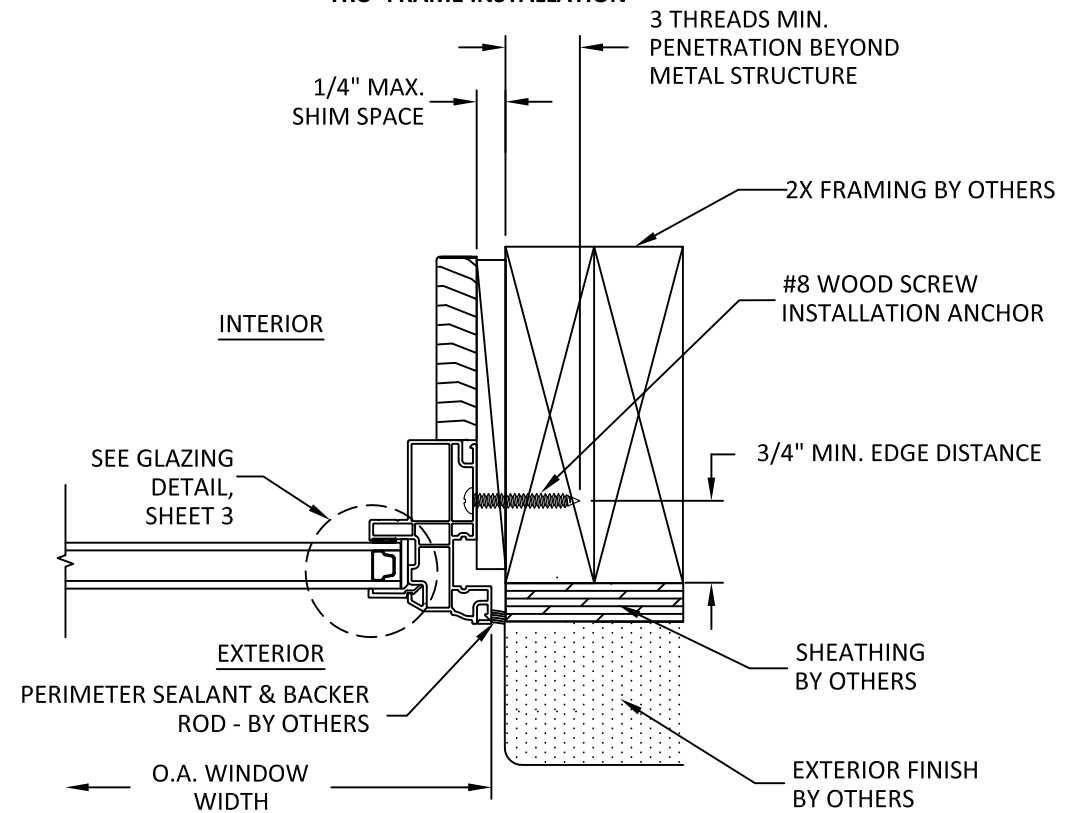
A
7 **VERTICAL SECTION**
BRICKMOULD FRAME - JAMB
TRU- FRAME INSTALLATION



B
7 **HORIZONTAL SECTION**
BRICKMOULD FRAME - SILL
TRU- FRAME INSTALLATION



C
7 **HORIZONTAL SECTION**
BRICKMOULD FRAME - JAMB
TRU- FRAME INSTALLATION



D
7 **HORIZONTAL SECTION**
BRICKMOULD FRAME - JAMB
TRU- FRAME INSTALLATION



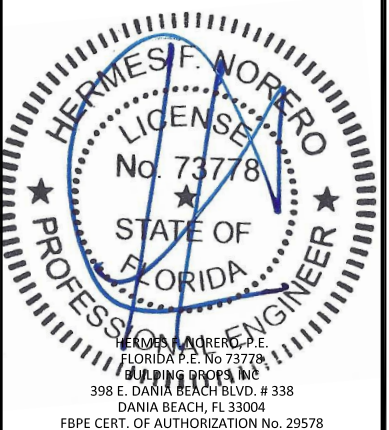
**WINDSOR WINDOWS
& DOORS**
900 S. 19TH STREET.
WEST DES MOINES, IA 50265
PH: (515)223-6660 FAX: (515)224-1938

TITLE: PRO FIXED FRAME
(NON-IMPACT) (NON-HVHZ)
THRU- FRAME INSTALLATION SECTIONS
(BRICKMOULD FRAME)

PREPARED BY:
BUILDING DROPS, INC.
398 E. DANIA BEACH BLVD., STE. 338
DANIA BEACH, FL 33004
PH: (954)399-8478
FAX: (954)744-4738
WEB: www.buildingdrops.com

| REMARKS | BY | DATE |
|---------|----|------|
| | | |
| | | |
| | | |
| | | |

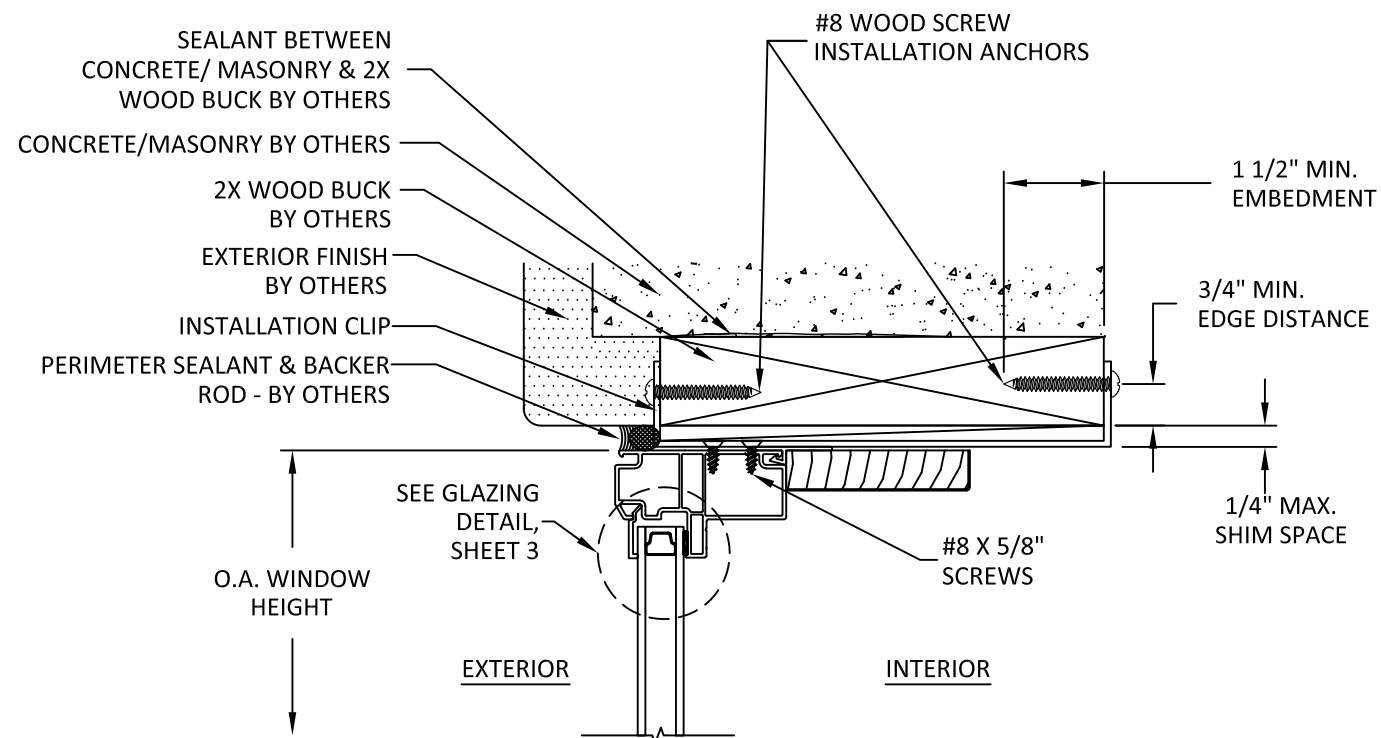
THE INSTALLATION DETAILS DESCRIBED HEREIN ARE GENERIC AND MAY NOT REFLECT ACTUAL CONDITIONS FOR A SPECIFIC SITE. IF SITE CONDITIONS CAUSE INSTALLATION TO DEVIATE FROM THE REQUIREMENTS DETAILED HEREIN, A LICENSED ENGINEER OR ARCHITECT SHALL PREPARE SITE SPECIFIC DOCUMENTS FOR USE WITH THIS DOCUMENT.



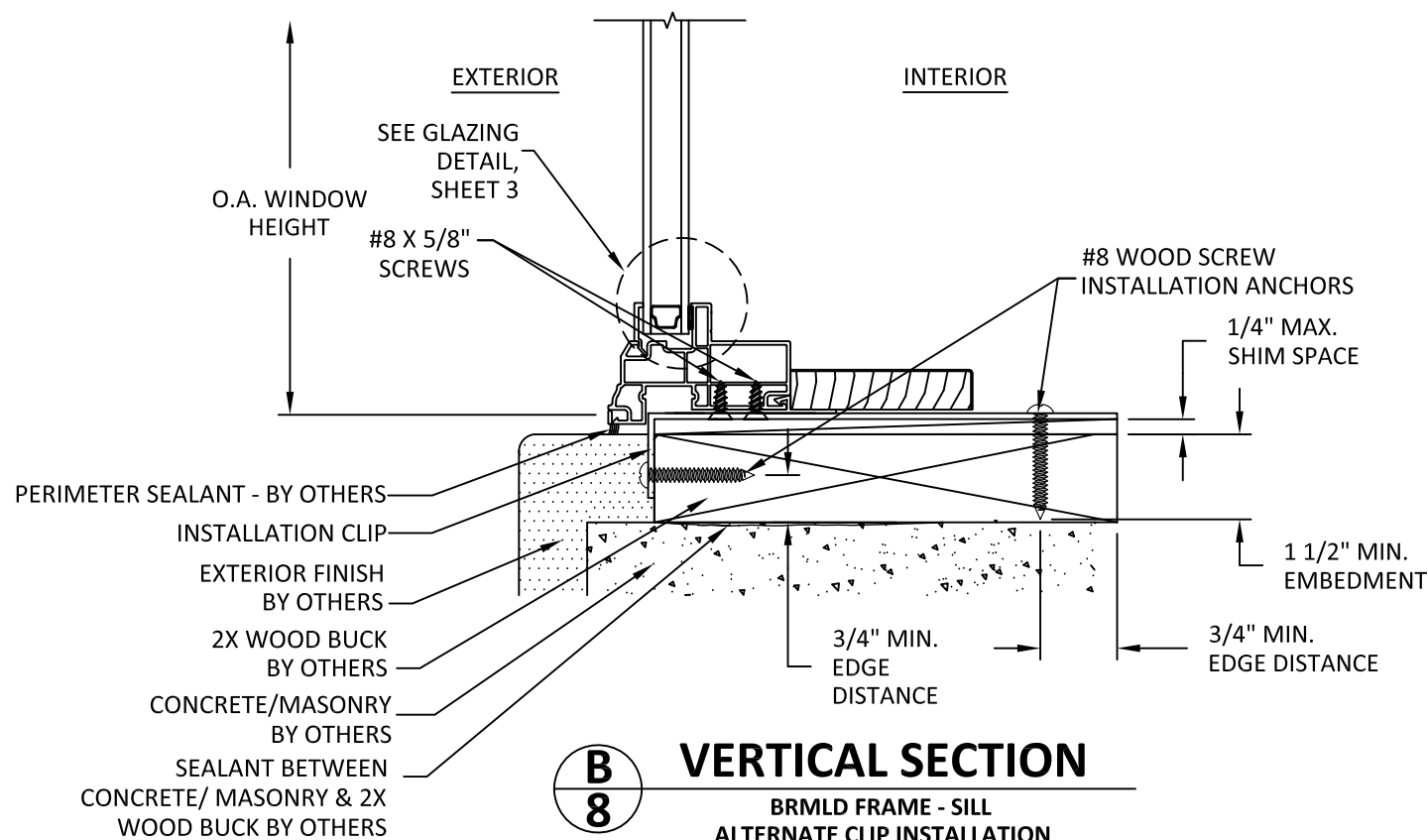
FL14873

DATE: **11.11.20**
DWG. BY: **ER** CHK. BY: **HFN**
SCALE: **NTS**
DWG. #: **WWD065**
SHEET:

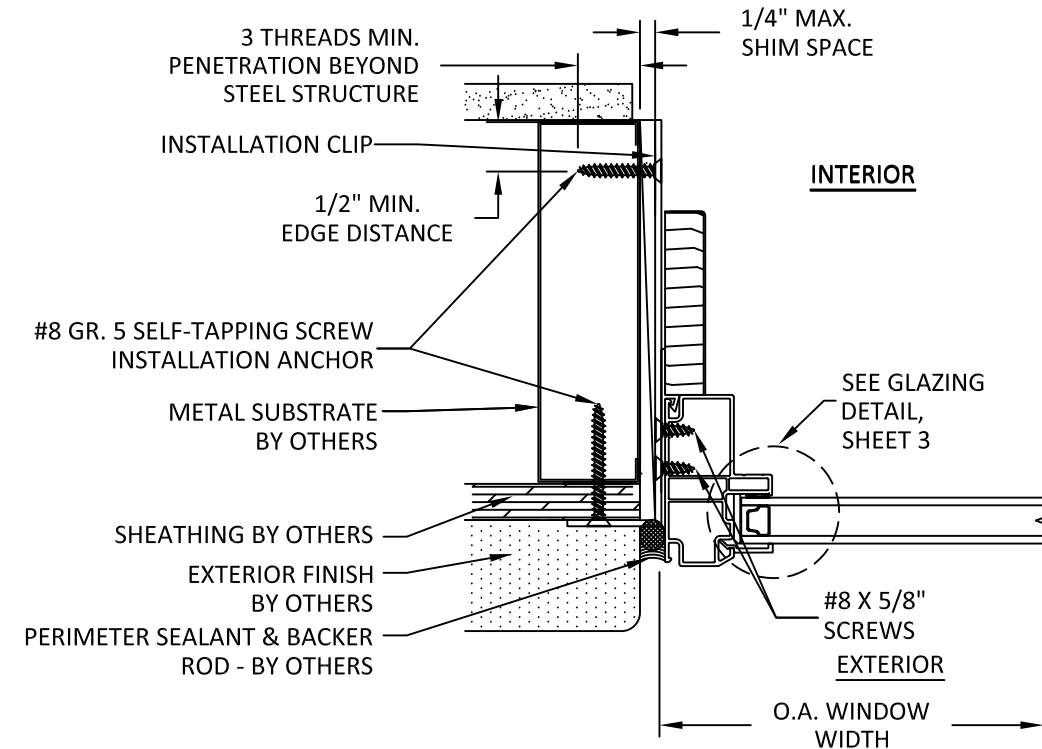
7
OF 9



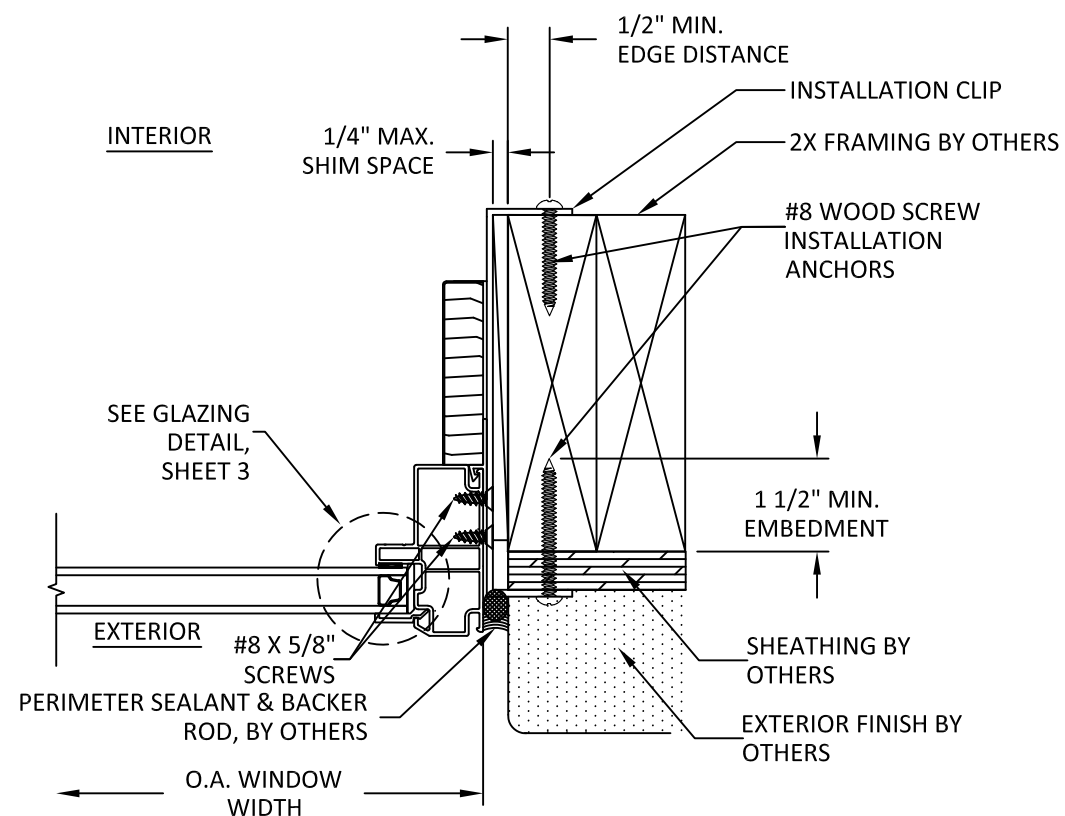
A
8 **VERTICAL SECTION**
BRMLD FRAME - HEAD
ALTERNATE CLIP INSTALLATION



B
8 **VERTICAL SECTION**
BRMLD FRAME - SILL
ALTERNATE CLIP INSTALLATION



C
8 **HORIZONTAL SECTION**
BRMLD FRAME - JAMB
ALTERNATE CLIP INSTALLATION



D
8 **HORIZONTAL SECTION**
BRMLD FRAME - JAMB
ALTERNATE CLIP INSTALLATION



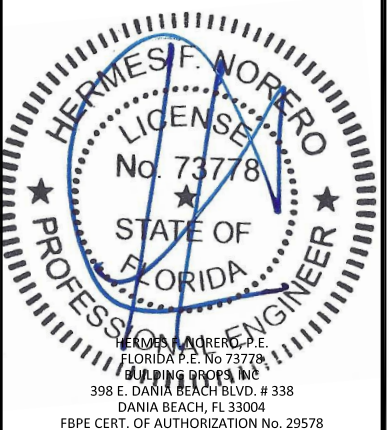
WINDSOR WINDOWS & DOORS
900 S. 19TH STREET.
WEST DES MOINES, IA 50265
PH: (515)223-6660 FAX: (515)224-1938

TITLE: PRO FIXED FRAME
(NON-IMPACT) (NON-HVHZ)
CLIP INSTALLATION SECTION
(BRICKMOLD FRAME)

PREPARED BY:
BUILDING DROPS, INC.
398 E. DANIA BEACH BLVD., STE. 338
DANIA BEACH, FL 33004
PH: (954)399-8478
FAX: (954)744-4738
WEB: www.buildingdrops.com

| REMARKS | BY | DATE |
|---------|----|------|
| | | |
| | | |
| | | |

THE INSTALLATION DETAILS DESCRIBED HERE IN ARE GENERIC AND MAY NOT REFLECT ACTUAL CONDITIONS FOR A SPECIFIC SITE. IF SITE CONDITIONS CAUSE INSTALLATION TO DEVIATE FROM THE REQUIREMENTS DETAILED HEREIN, A LICENSED ENGINEER OR ARCHITECT SHALL PREPARE SITE SPECIFIC DOCUMENTS FOR USE WITH THIS DOCUMENT.



FL14873

DATE: **11.11.20**

DWG. BY: **ER** CHK. BY: **HFN**

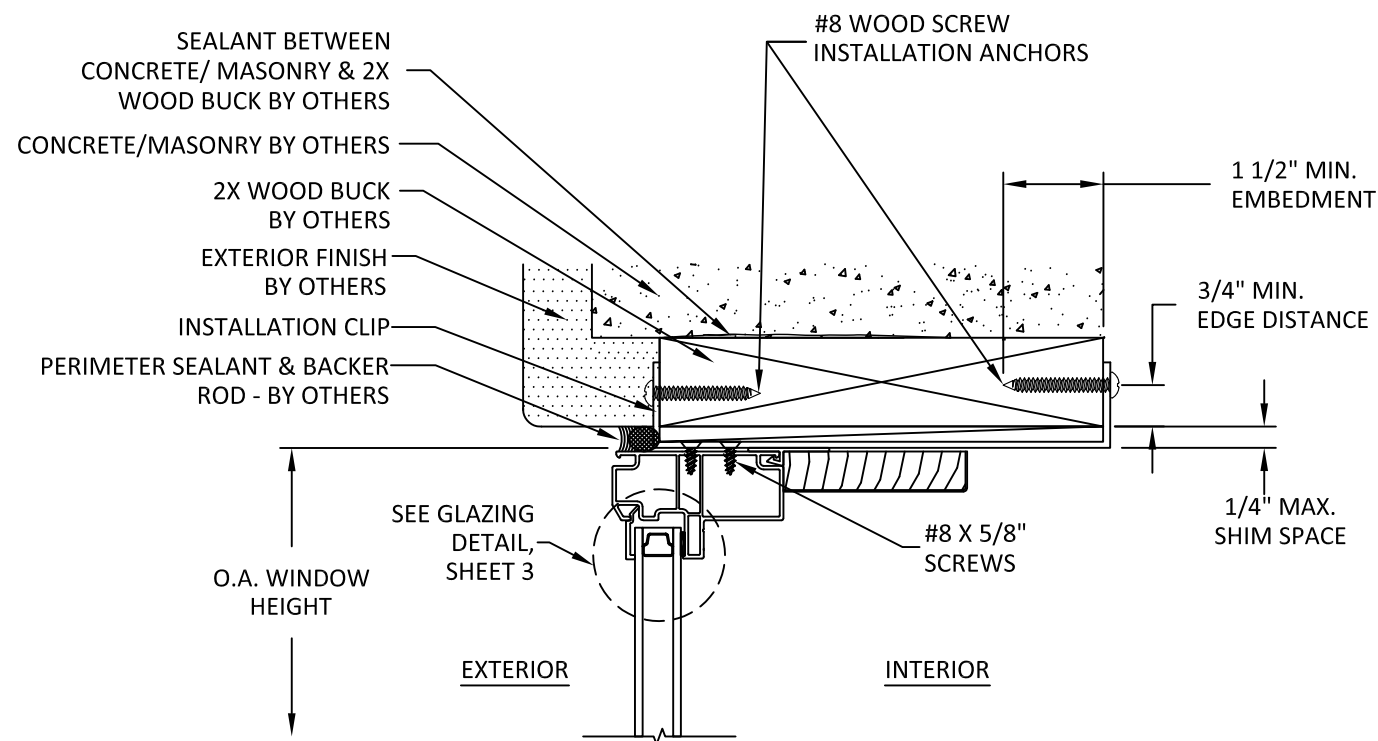
SCALE: **NTS**

DWG. #: **WWD065**

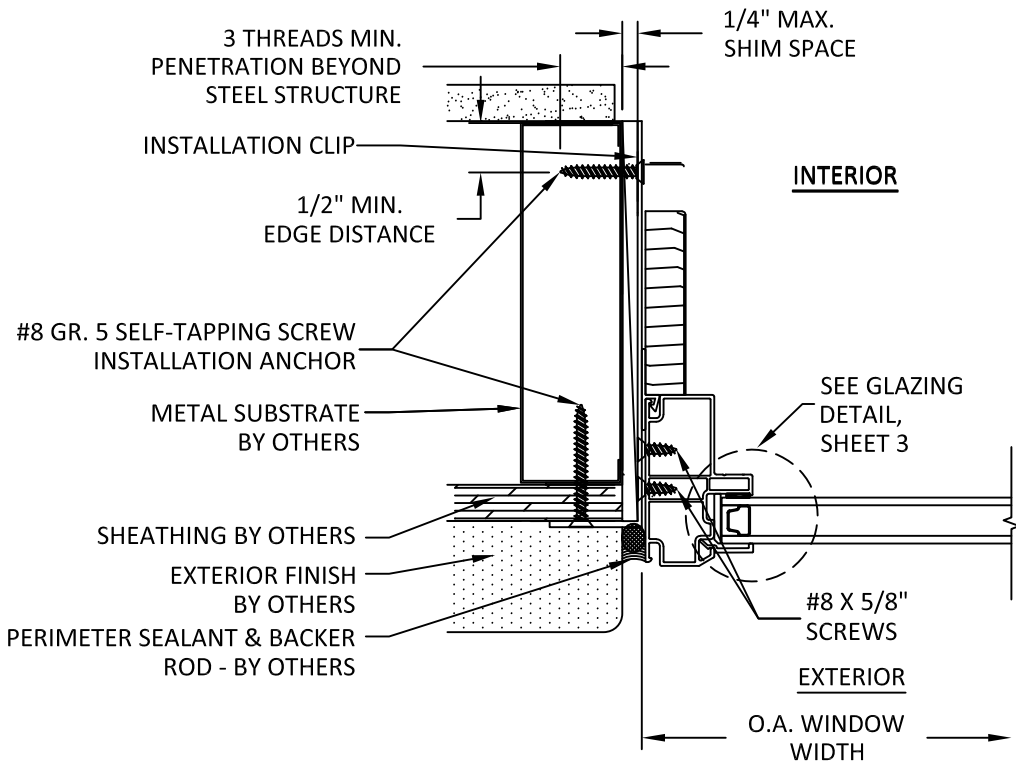
SHEET:

8

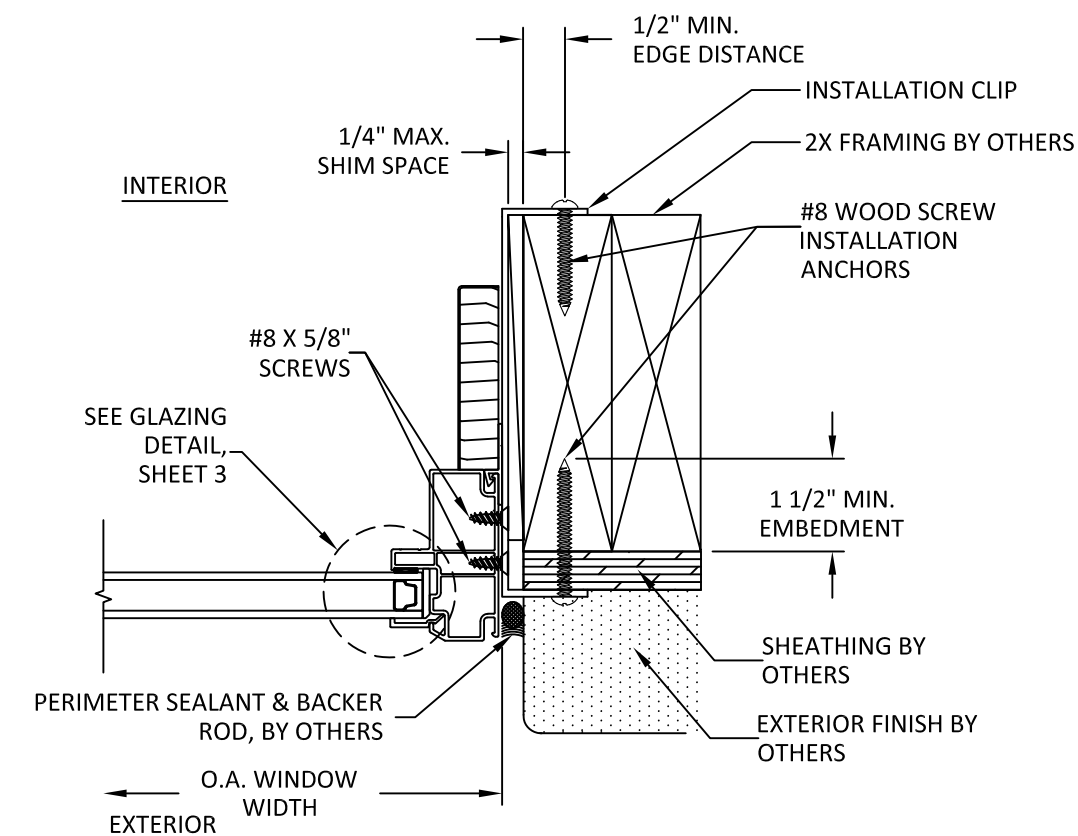
OF 9



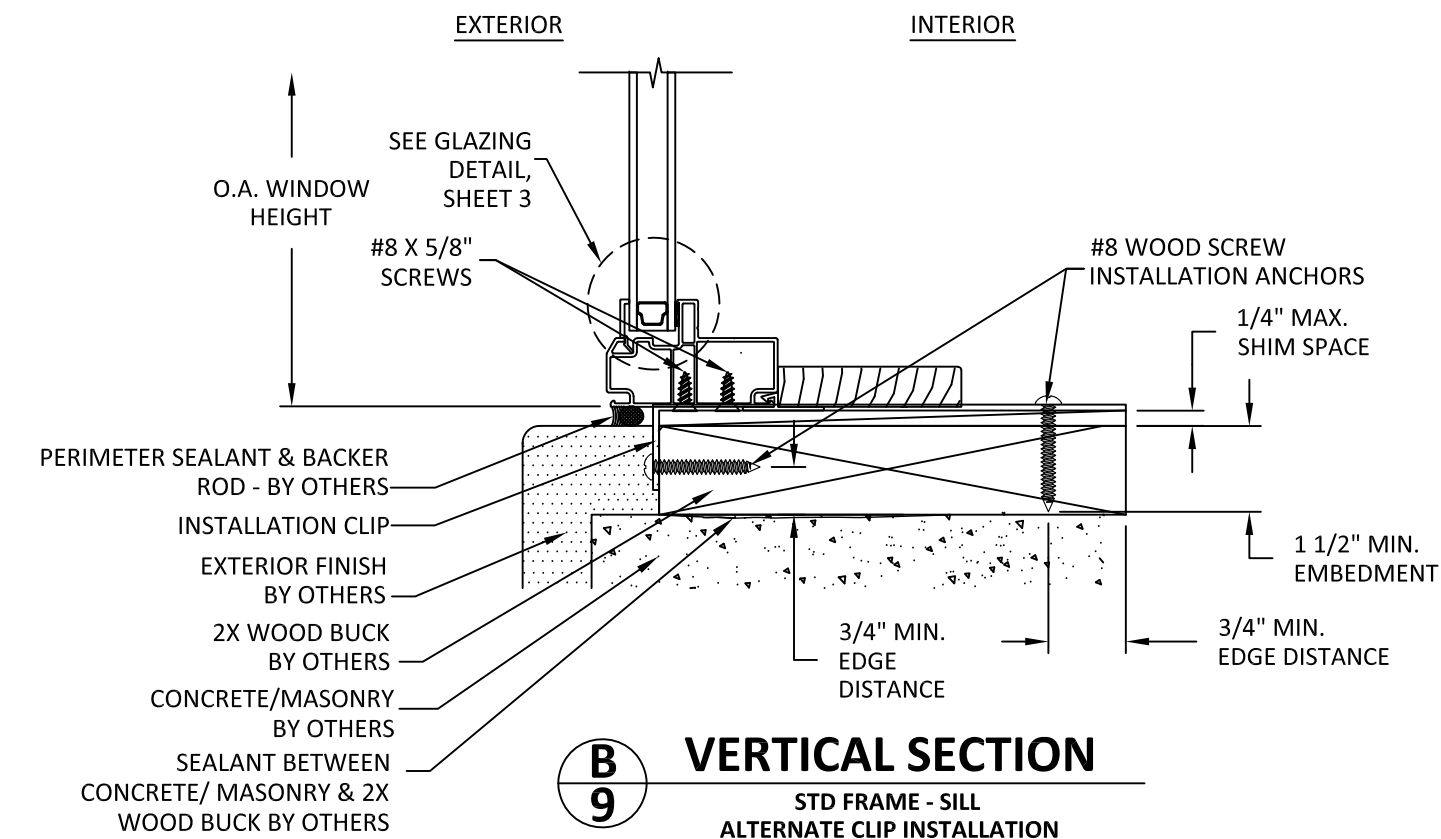
A
9 **VERTICAL SECTION**
STD FRAME - HEAD
ALTERNATE CLIP INSTALLATION



C
9 **HORIZONTAL SECTION**
STD FRAME - JAMB
ALTERNATE CLIP INSTALLATION



D
9 **HORIZONTAL SECTION**
STD FRAME - JAMB
ALTERNATE CLIP INSTALLATION



B
9 **VERTICAL SECTION**
STD FRAME - SILL
ALTERNATE CLIP INSTALLATION



WINDSOR WINDOWS & DOORS
900 S. 19TH STREET.
WEST DES MOINES, IA 50265
PH: (515)223-6660 FAX: (515)224-1938

TITLE: PRO FIXED FRAME
(NON-IMPACT) (NON-HVHZ)

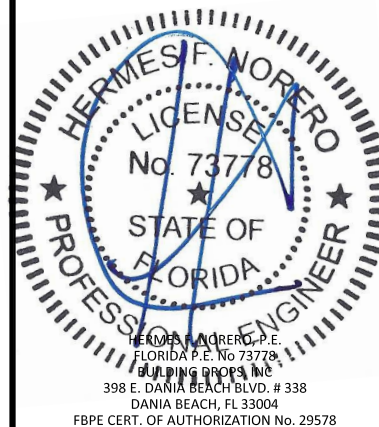
CLIP INSTALLATION SECTION
(STANDARD FRAME)

PREPARED BY:

BUILDING DROPS, INC.
398 E. DANIA BEACH BLVD., STE. 338
DANIA BEACH, FL 33004
PH: (954)399-8478
FAX: (954)744-4738
WEB: www.buildingdrops.com

| REMARKS | BY | DATE |
|---------|----|------|
| | | |
| | | |
| | | |
| | | |

THE INSTALLATION DETAILS DESCRIBED HERE IN ARE GENERIC AND MAY NOT REFLECT ACTUAL CONDITIONS FOR A SPECIFIC SITE. IF SITE CONDITIONS CAUSE INSTALLATION TO DEVIATE FROM THE REQUIREMENTS DETAILED HEREIN, A LICENSED ENGINEER OR ARCHITECT SHALL PREPARE SITE SPECIFIC DOCUMENTS FOR USE WITH THIS DOCUMENT.



FL14873

DATE: **11.11.20**

DWG. BY: **ER**

CHK. BY: **HFN**

SCALE: **NTS**

DWG. #: **WWD065**

SHEET:

9

OF 9